



PEMERINTAH DAERAH
PROVINSI JAWA BARAT



BADAN PERENCANAAN
PEMBANGUNAN DAERAH

WEST JAVA PUBLIC PRIVATE PARTNERSHIP

Dr. Iendra Sofyan, S.T., M.Si.

Head of Economy and Natural Resources at
West Java Regional Planning and Development Agency

PPP Node Coordinator

November 2019



VISION AND MISSION

WEST JAVA PROVINCIAL GOVERNMENT 2018-2023



VISION

West Java as the Champion Province through Innovation and Collaboration

MISSION



1. *To form a devoted human with increasing the role of mosques and places for religious activity as the center of civilization.*



2. *To gave birth to human beings who are cultured, qualified, happy and productive with improving innovative public services.*



3. *To accelerate the growth and equitable development of environment and spatial-based development that is sustainable through increasing regional connectivity and regional structuring.*



4. *To improve the productivity and competitiveness of the prosperous and fair economy of the people with the use of digital technology and collaboration with innovation centers and development actors.*



5. *To realize innovative governance and collaborative leadership between the central, provincial and district / city governments*

WEST JAVA IN A GLANCE

West Java In a Glance



West Java Area: 35.377,76 square kilometers
 Only 1,8% of Indonesia's Total Area: despite that the province has major role in Indonesia's development.

West Java In Indonesia
 Located in Java Island



DEMOGRAPHIC CONDITION

WEST JAVA	SOUTH KOREA	SAUDI ARABIA
48 MILLION	51 MILLION	33 MILLION
	AUSTRALIA	MALAYSIA
	25 MILLION	32 MILLION

ECONOMIC GROWTH RATE

WEST JAVA	SOUTH KOREA	SAUDI ARABIA
5.3%	2.7%	2.2%
	AUSTRALIA	MALAYSIA
	2.8%	4.7%

WEST JAVA DEVELOPMENT POTENTIAL



AREA

35,4 million Ha



3 METROPOLITAN

As a **National Activity Center**



POPULATION

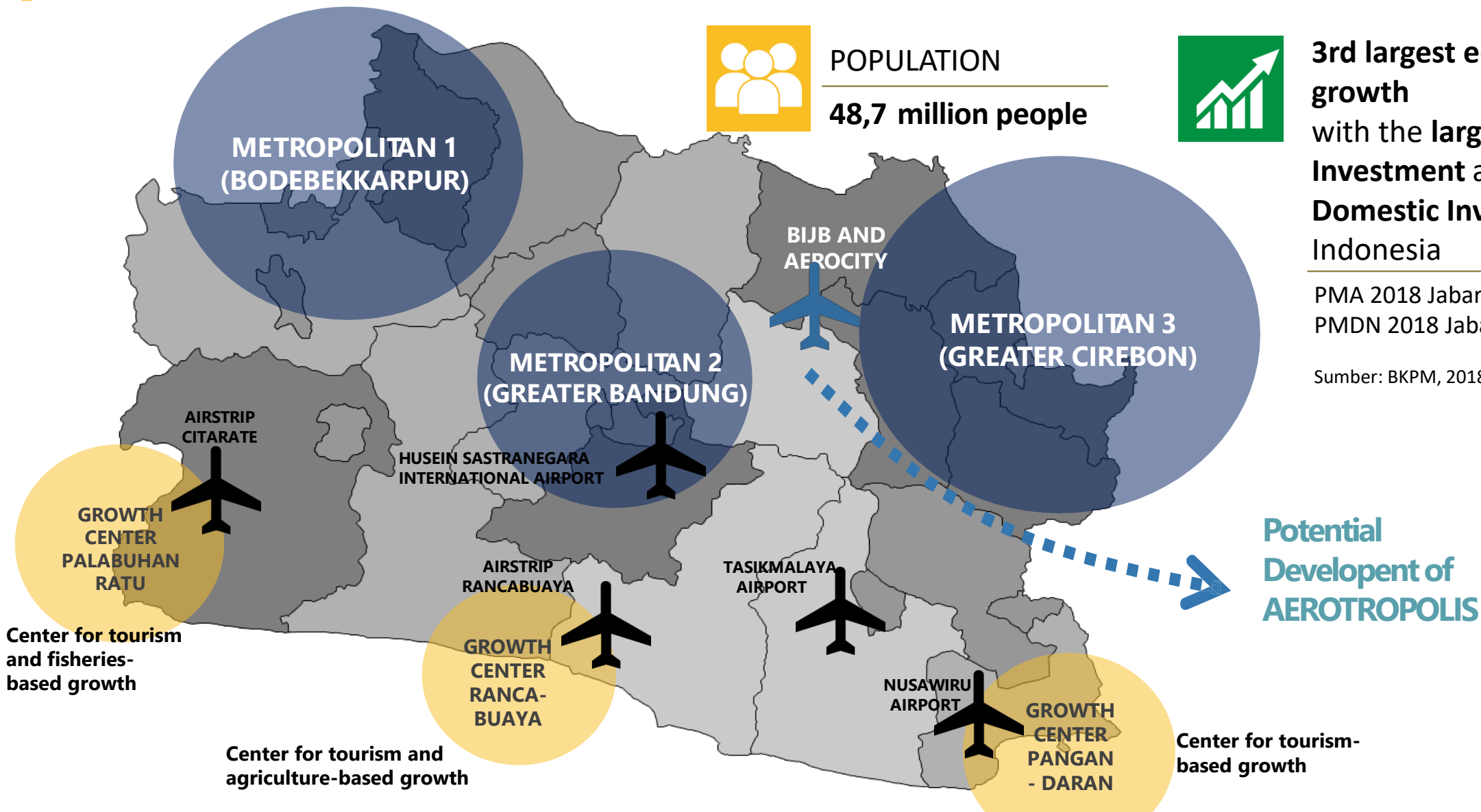
48,7 million people



3rd largest economic growth with the **largest Foreign Investment and Domestic Investment** in Indonesia

PMA 2018 Jabar: \$5.6 M
PMDN 2018 Jabar: 49.1 T

Sumber: BKPM, 2018

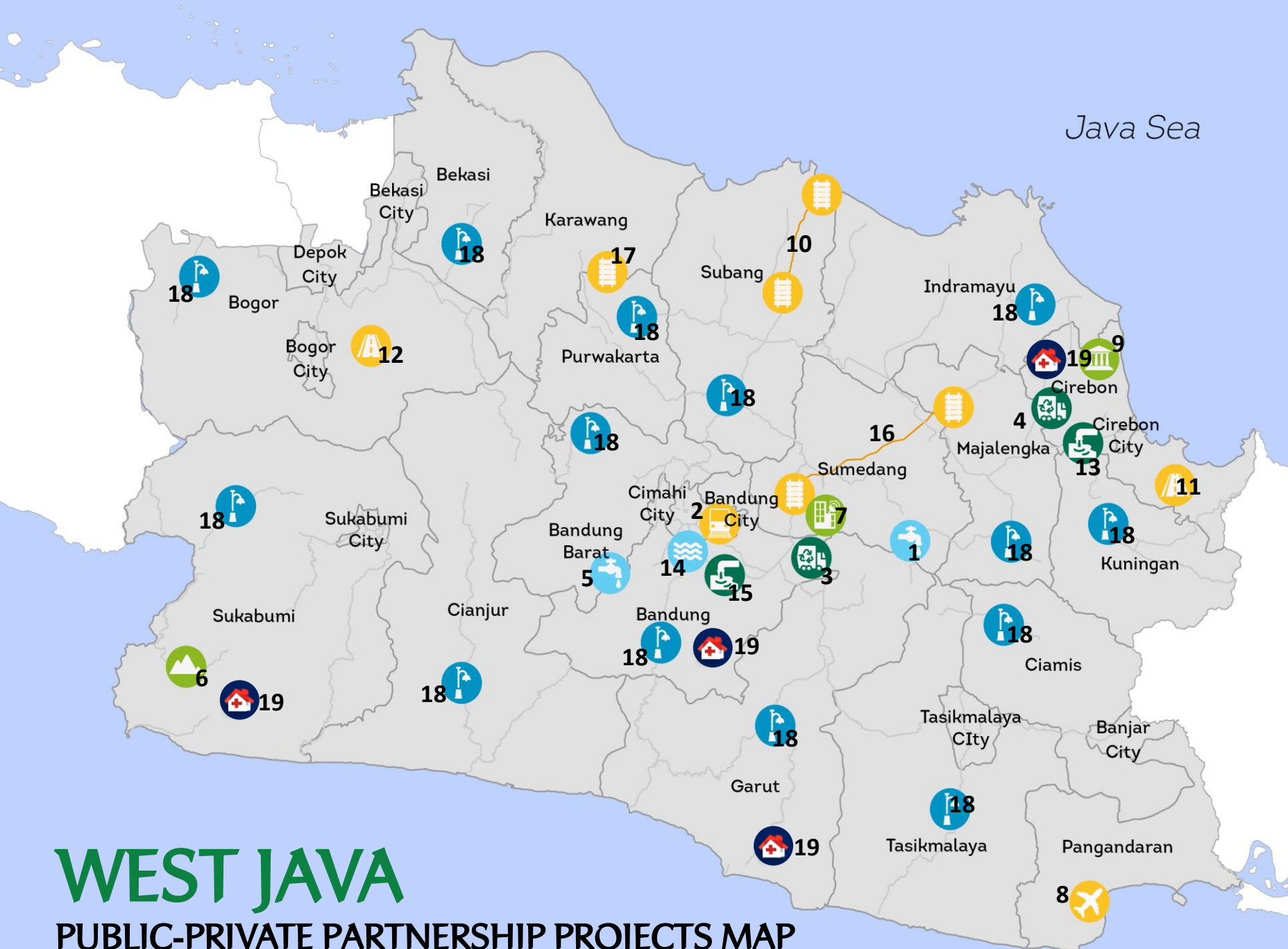


Center for tourism and fisheries-based growth

Center for tourism and agriculture-based growth

Center for tourism-based growth

Potential Development of **AEROTROPOLIS**



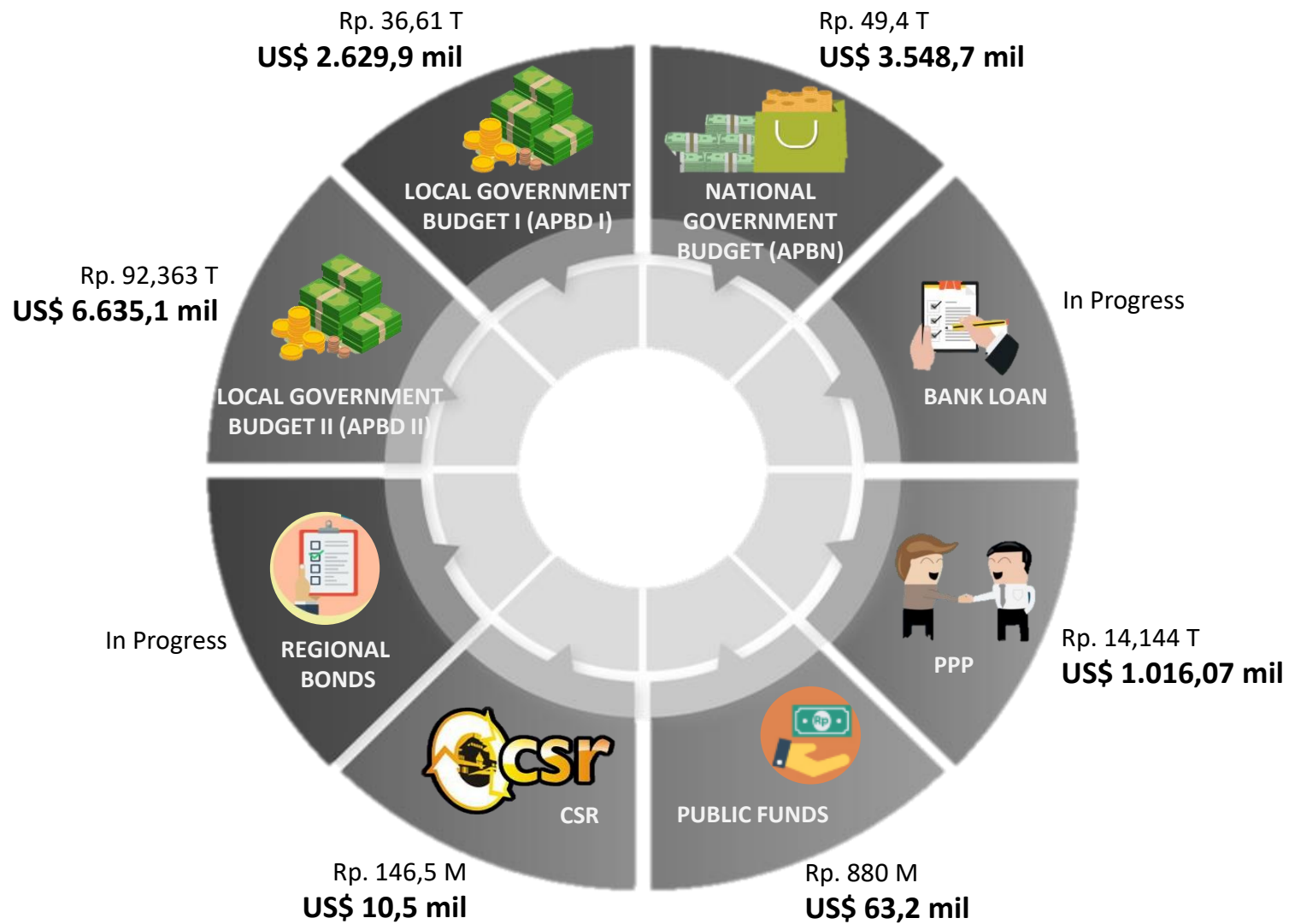
Java Sea

WEST JAVA

PUBLIC-PRIVATE PARTNERSHIP PROJECTS MAP

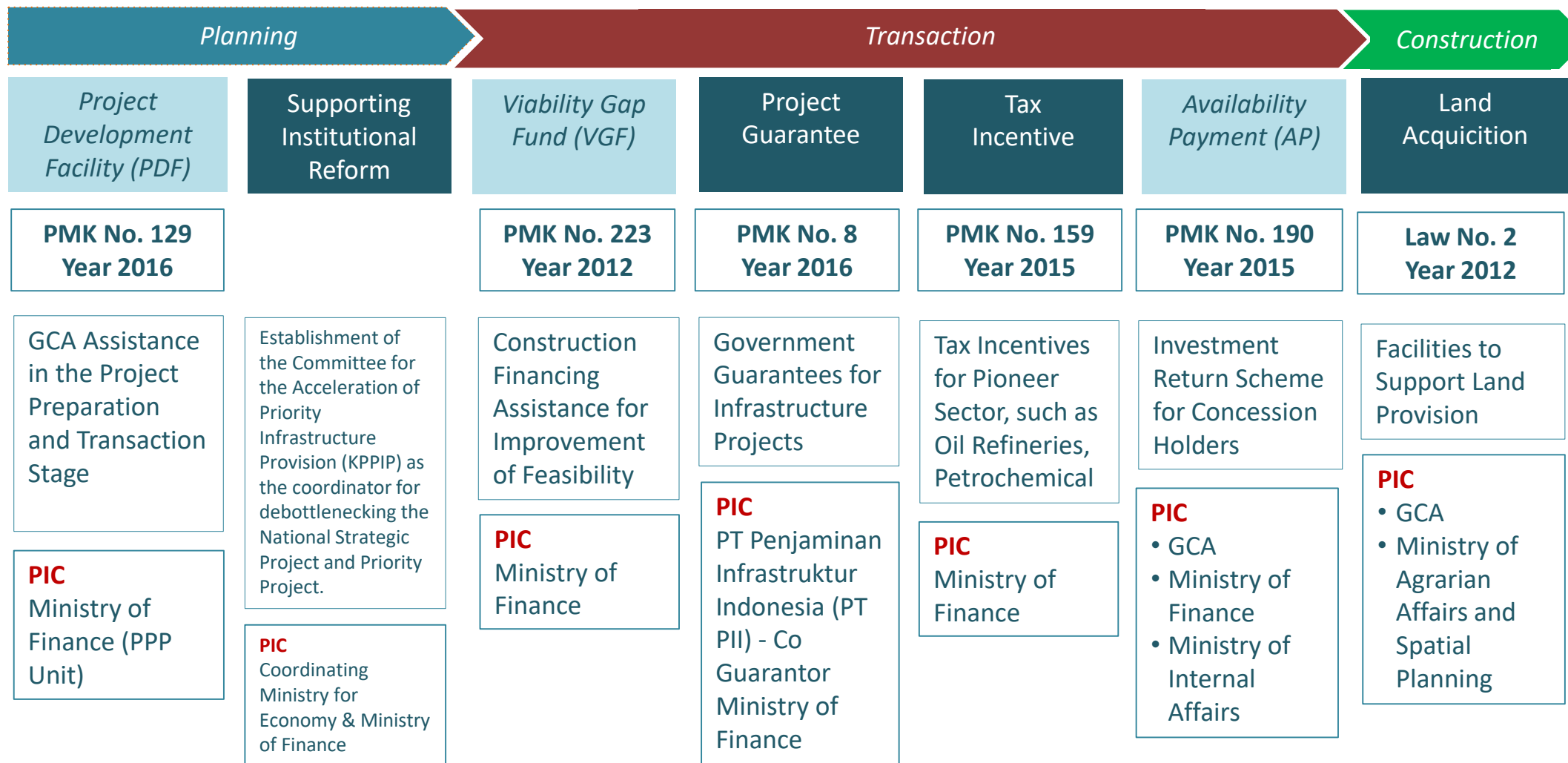
- 1 Jatigede Water Treatment Plant
- 2 Greater Bandung Urban Mobility
- 3 Legok Nangka Solid Waste Treatment Plant
- 4 Greater Cirebon Solid Waste Treatment Plant
- 5 Greater Bandung (Sinumbra) Water Treatment Plant
- 6 Geopark Ciletuh Tourism Area
- 7 Science Technopark Jatinangor
- 8 New Nusawiru Airport
- 9 Cirebon MICE Complex
- 10 Patimban Railway Access
- 11 Cirebon Ringroad
- 12 Puncak Pass Access Way
- 13 Greater Cirebon Liquid Waste Treatment Plant
- 14 Greater Bandung Retention Pond
- 15 Greater Bandung Liquid Waste Treatment Plant
- 16 Kertajati Railway Access
- 17 Cibungur – Tanjung Rasa Shortcut Railway
- 18 Public Street Lighting
- 19 Regional Hospital:
 - 1. Jampang Kulon Hospital
 - 2. Pameungpeuk Hospital
 - 3. Sidawangi Pulmonary Hospital
 - 4. Al-Ihsan Hospital

WEST JAVA DEVELOPMENT FUNDING COLLABORATION



Source: PPED (2018)
***Estimated 20 Project

PPP REGULATION SUPPORT IN INDONESIA



WEST JAVA GOVERNOR'S DECREE ABOUT PPP NODE FOR INFRASTRUCTURE DEVELOPMENT



GUBERNUR JAWA BARAT

KEPUTUSAN GUBERNUR JAWA BARAT

NOMOR 120/Kep.185-Bapp/2019

TENTANG

SIMPUL KERJA SAMA PEMERINTAH DAERAH PROVINSI JAWA BARAT DENGAN
BADAN USAHA DALAM PENYEDIAAN INFRASTRUKTUR

GUBERNUR JAWA BARAT,

Menimbang : bahwa menindaklanjuti ketentuan Pasal 44 ayat (1) Peraturan Presiden Nomor 38 Tahun 2015 tentang Kerja Sama Pemerintah dengan Badan Usaha Dalam Penyediaan Infrastruktur, perlu membentuk Simpul Kerja Sama Pemerintah Daerah Provinsi Jawa Barat dengan Badan Usaha Dalam Penyediaan Infrastruktur, yang ditetapkan dengan Keputusan Gubernur Jawa Barat;

Mengingat : 1. Undang-Undang Nomor 11 Tahun 1950 tentang Pembentukan Propinsi Djawa Barat (Berita Negara Republik Indonesia tanggal 4 Djuli 1950) jo. Undang-Undang Nomor 20 Tahun 1950 tentang Pemerintahan Jakarta Raya (Lembaran Negara Republik Indonesia Tahun 1950 Nomor 31, Tambahan Lembaran Negara Republik Indonesia Nomor 15) sebagaimana telah diubah beberapa kali, terakhir dengan Undang-Undang Nomor 29 Tahun 2007 tentang Pemerintahan Provinsi Daerah Khusus Ibukota Jakarta sebagai Ibukota Negara Kesatuan Republik Indonesia (Lembaran Negara Republik Indonesia Tahun 2007 Nomor 93, Tambahan Lembaran Negara Republik Indonesia Nomor 4744) dan Undang-Undang Nomor 23 Tahun 2000 tentang Pembentukan Propinsi Banten (Lembaran Negara Republik Indonesia Tahun 2000 Nomor 182, Tambahan Lembaran Negara Republik Indonesia Nomor 4010);

2. Undang-Undang Nomor 25 Tahun 2004 tentang Sistem Perencanaan Pembangunan Nasional (Lembaran Negara Republik Indonesia Tahun 2004 Nomor 104, Tambahan Lembaran Negara Republik Indonesia Nomor 4421)

3. Undang-Undang Nomor 17 Tahun 2007 tentang Rencana Pembangunan Jangka Panjang Tahun 2005-2025 (Lembaran Negara Republik Indonesia Tahun 2007 Nomor 33, Tambahan Lembaran Negara Republik Indonesia Nomor 4700);

4. Undang-Undang Nomor 26 Tahun 2007 tentang Penataan Ruang (Lembaran Negara Republik Indonesia Tahun 2007 Nomor 68, Tambahan Lembaran Negara Republik Indonesia Nomor 4725);

PPP NODE ACTIVITIES

- PPP projects synchronization
- PPP projects coordination
- PPP projects monitoring & evaluation
- Capacity building to plan and implement PPP
- Certification program from APMG International



WEST JAVA PPP PROJECTS PLAN

A. UNDER CONSTRUCTION

NO.	PROJECT NAME	CAPEX	PROGRESS
1	WTE Lulut Nambo	IDR 450 Billion	Construction

B. READY TO OFFER

NO.	PROJECT NAME	CAPEX	PROGRESS
1	WTE Legok Nangka	IDR 3.5 Trillion	Transaction Phase
2	Jatigede Drinking Water Supply	IDR 2.1 Trillion	OBC finished
3	Greater Bandung Metropolitan Railway	IDR 4.7 Trillion	Review OBC documents
4	WTE Ciayumajakuning	IDR 500 Billion	Review preliminary study

C. UNDER PREPARATION

NO.	NAMA PROYEK	NILAI	PROGRES
1	Hospital Development	IDR 350 Billion – IDR 1.4 Trillion	Prepare for the Preliminary Studies
2	Roof Solar Power Plant in Provincial Government Buildings	IDR 400 Billion	Planning phase

C. UNDER PREPARATION

NO.	NAMA PROYEK	NILAI	PROGRES
3	Public Street Lighting in Provincial Street	IDR 400 Billion	Planning phase
4	Ciletuh Geopark Tourism	IDR 200 Billion for accessibility	Planning phase
5	Greater Bandung Waste Water Management Sytem	IDR 200 Billion	Planning phase
6	Bandung Drinking Water Supply	IDR 2.9 Trillion	Planning phase
7	Puncak Road II	IDR 1.2 Trillion	Planning phase
8	Cirebon Ring Road		Planning phase
9	Railway to Patimban	IDR 1.1 Trillion	Planning phase
10	Railway to Kertajati	IDR 2.7 Trillion	Planning phase
11	Cibungur – Tanjunggrasa Shortcut	IDR 1.9 Trillion	PDF request is submitted by Directorate General of Railways (DJKA)
12	Nusawiru Airport	IDR 238 Billion	Planning phase
13	Cirebon MICE Area		Planning phase
14	Bandung Regency Retention Basin		Planning phase
15	Greater Cirebon Waste Water Management System	IDR 150 Billion	Planning phase
16	Bandung Regency LRT		Planning phase

THANK YOU

West Java PPP Node Secretariat

Bappeda Provinsi Jawa Barat

Address: Jalan Ir. H. Juanda No. 287 Bandung 40135

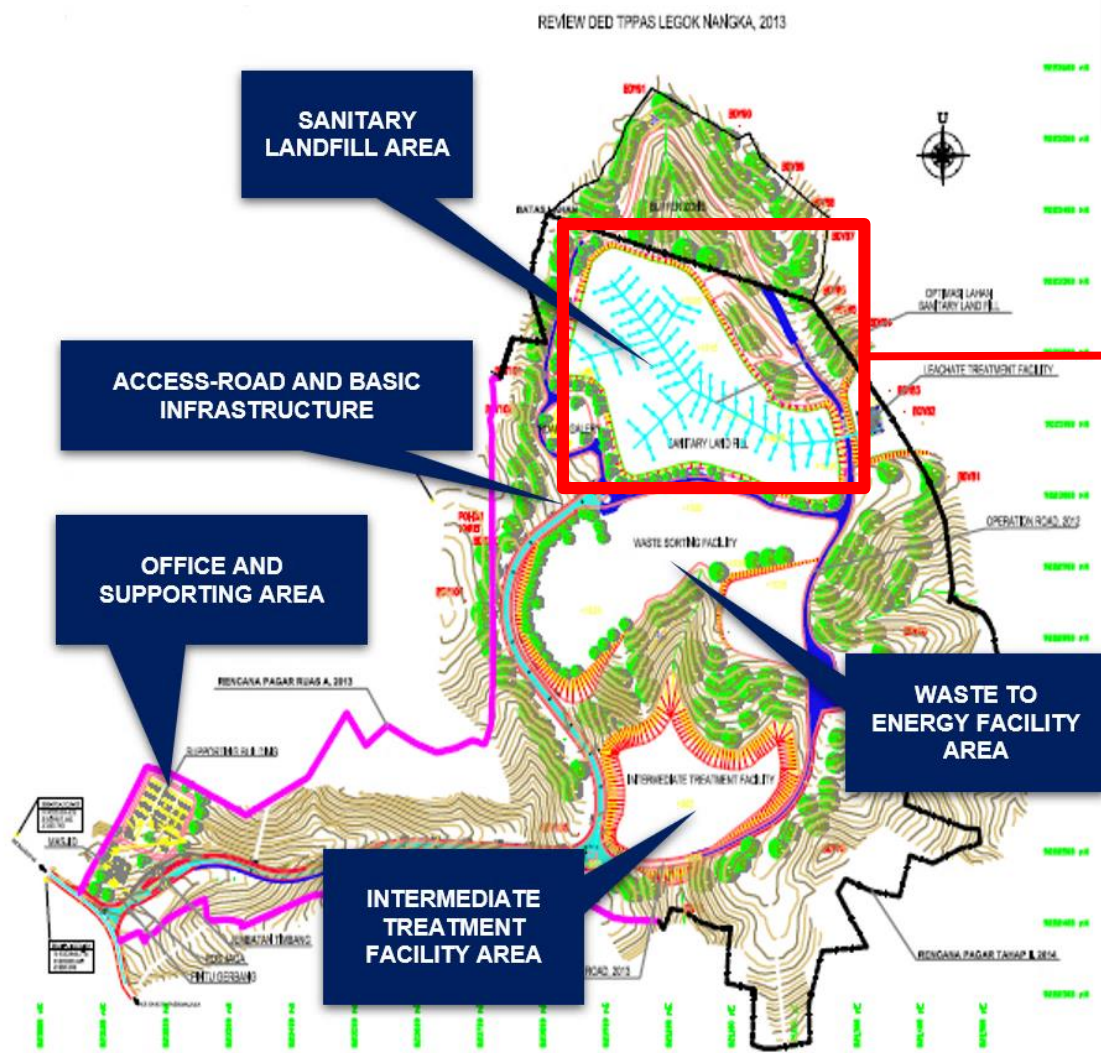
Phone: 022-2516061 Fax: 022-2510731

Website: www.bappeda.jabarprov.go.id

Email: simpulkpjubar@gmail.com

APPENDIX

LEGOK NANGKA WTE



CAPACITY
1.853 – 2.131
TONS/DAY

TOTAL AREA
90_{Ha}

ESTIMATED INVESTMENT COST
IDR 3.5 – 4.4
TRILLION



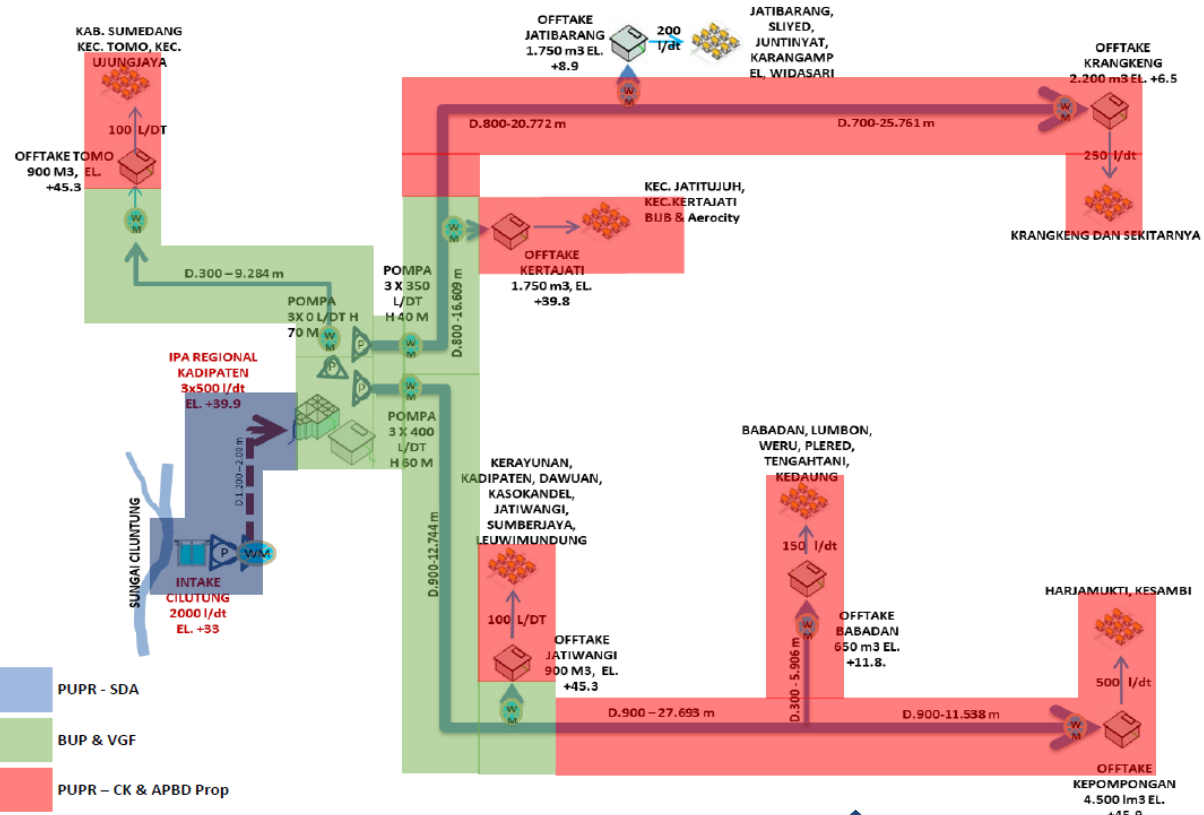
Legok Nangka Waste to Energy (WTE) project is designed to use thermal technology that generates electricity. WTE is projected to overcome the waste problem of 6 cities by producing electricity that can be utilized as a power generator supply to PLN. The business enterprise is expected to assist investment, development and project management. The return on investment is obtained from the sale of electricity to PLN and the tipping fee that is withdrawn from the beneficiary city/district.

JATIGEDE REGIONAL WATER SUPPLY SYSTEM



CAPACITY
1.500
LITRE/SECOND

ESTIMATED INVESTMENT COST
IDR 2.1
TRILLION



Water Treatment Plant Pumping to 7 locations of Off-take reservoir

Jatigede regional water supply system is planned to serve the Greater Cirebon Area. The system is designed with a capacity of 1500 lps which will flow through 5 municipalities. Business Enterprise assists the investment, construction and operation of the production and transmission system to the Reservoir at 7 off-take locations. The business enterprise is expected to assist investment, development and project management. The return on investment is obtained from the sale of bulk water to PDAMs in 5 cities

REVISI: 01/2023

CIAYUMAJAKUNING WASTE TO ENERGY PROJECT

CAPACITY

1000
TONS/DAY

TOTAL AREA

55 Ha

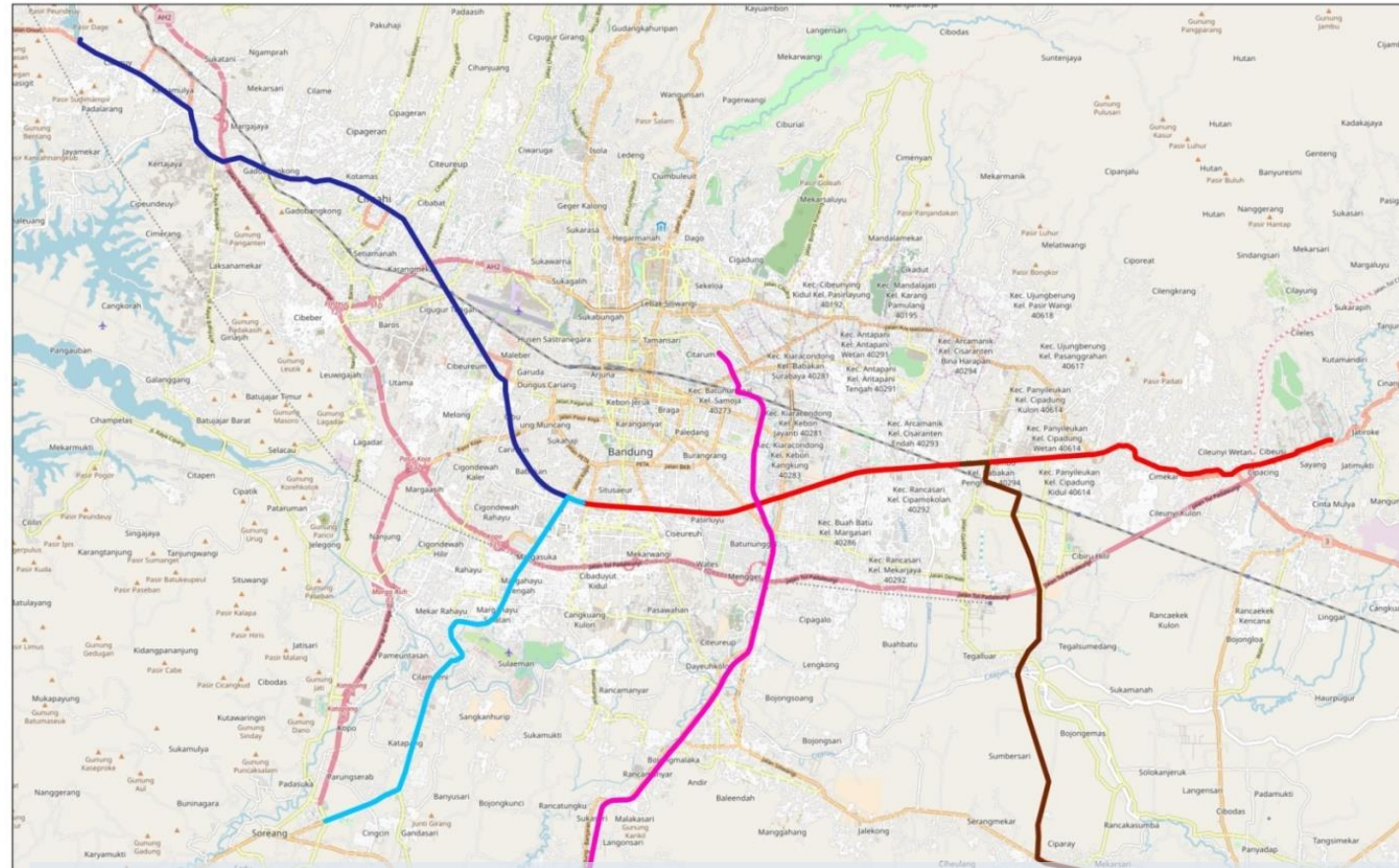
ESTIMATED INVESTMENT COST

IDR **500**
BILLION



The Ciayumajakuning Waste to Energy Project is designed to cover Greater Cirebon area. This project will managed solid waste generate from 5 municipalities. Around the services area, there are 10 new cities will be developed known as the Rebana Golden Triangle. Recognizing population growth, urban development and estimated waste production, WTE will be built under the PPP scheme.

METROPOLITAN BANDUNG URBAN RAILWAY SYSTEM DEVELOPMENT



CAPACITY
26843
PASSANGERS/DAY

**ESTIMATED
INVESTMENT COST**
IDR **4.7**
TRILLION

Metropolitan Bandung Urban Railway System Development is a project to provide alternative public transportation services in support of the Greater Bandung urban activities, this project has 7 lines and will be built in stages.

Very large investment costs required and very limited of government funding ability, opens opportunities for private sector participation in building urban transport infrastructure

HOSPITAL DEVELOPMENT

PAMEUNGPEUK REGIONAL HOSPITAL



CAPACITY

Existing: 152 bed
Upgrade to: 300 bed

TOTAL AREA

7.3_{Ha}

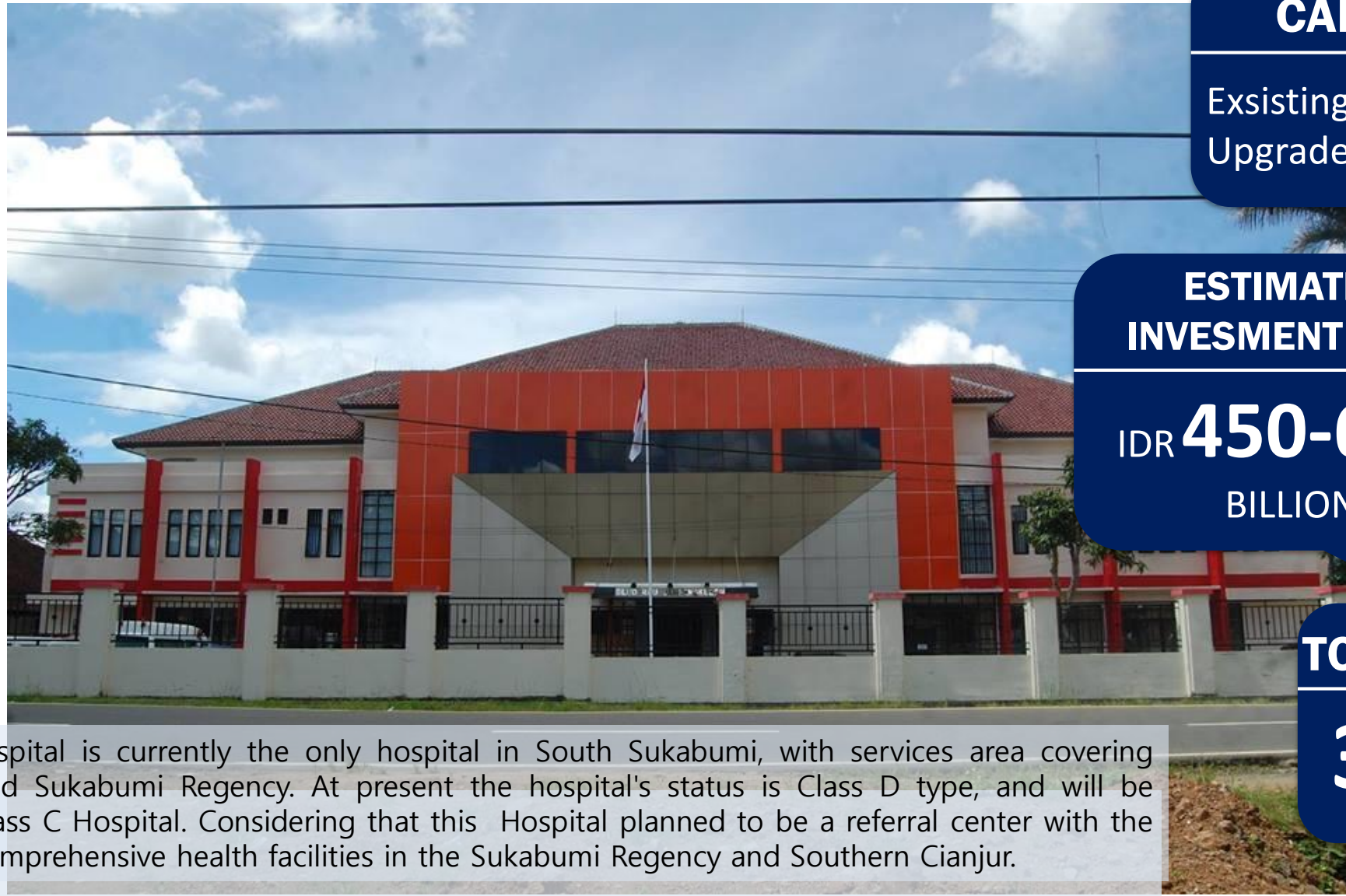
ESTIMATED INVESTMENT COST

IDR **350-400**
BILLION

Pameungpeuk Hospital is the Class C hospital with a service capacity of 15,000 out patients per year and 5,000 in patients. To improve health services in the south West Java, the provincial government will develop Pameungpeuk Hospital to become Class B Hospital with increasing the number of human resources and improving health service facilities.

HOSPITAL DEVELOPMENT

JAMPANG KULON REGIONAL HOSPITAL



CAPACITY

Existing: 262 bed
Upgrade to: 700 bed

ESTIMATED INVESTMENT COST

IDR **450-600**
BILLION

TOTAL AREA

3.59 Ha

Jampang Kulon Hospital is currently the only hospital in South Sukabumi, with services area covering Cianjur Regency and Sukabumi Regency. At present the hospital's status is Class D type, and will be upgraded to the Class C Hospital. Considering that this Hospital planned to be a referral center with the largest and most comprehensive health facilities in the Sukabumi Regency and Southern Cianjur.

HOSPITAL DEVELOPMENT AL IHSAN HOSPITAL

CAPACITY

Existing: 350 bed
Plan: 1000 bed

ESTIMATED INVESTMENT COST

IDR **400-600**
BILLION

TOTAL AREA

3.59 Ha



Al-Ihsan Hospital currently a Class-B Hospital owned by West Java Province. The number of patients handled by Al Ihsan Hospital reaches 800 - 1000 patients per day.

To develop Al-Ihsan into a Class-A Hospital with more complete facilities, the Provincial Government invites partners from private / business entities that are experienced in Hospital management, to increased health services.

HOSPITAL DEVELOPMENT

SIDAWANGI PULMONARY HOSPITAL



CAPACITY

Existing: 112 bed
Plan: 400 bed

**ESTIMATED
INVESTMENT COST**

IDR **400-500**
BILLION

TOTAL AREA

10 Ha

Sidawangi Pulmonary Hospital, is currently a Class B specialty lung disease hospital. Located on the border between Kab. Cirebon and Kuningan. Initially it functioned as a sanatorium for tuberculosis which was built by the Government of the Netherlands East Indies in 1939. In 1978, it was changed to Hospital status and in 2002 it was handed over to West Java Province. In 2008 the status officially became Lung Hospital in West Java Province. As an effort to develop, this Paru Sidawangi Hospital plans to improve its facilities and services to become Class A General Hospital.

SOLAR PANEL ROOFTOP ON GOVERNMENTS BUILDING



CAPACITY
15-20
MW

**ESTIMATED
INVESTMENT COST**
IDR 400
BILLION

To reduce dependency on fossil fuels, the Government of West Java Province will install solar panels in Local Government buildings, school buildings, sports buildings and health facilities. The Provincial Government will cooperate with business entities for the procurement of Solar Panels and Business Entities receive the right to manage and export electricity to PLN. The Provincial Government has benefited from the reduced electricity costs that must be incurred for the operation of Government Buildings and Schools.