



The Global Infrastructure Facility
**Preparing Green and
Bankable Infrastructure
Pipeline at Scale**

Seoul, Oct 31, 2023
Asia PPP Network 2023

PART 1
GIF Intro

PART 2
Case Studies

An aerial, grayscale photograph of a city, likely Rio de Janeiro, featuring a prominent cable-stayed bridge crossing a river. The bridge has a tall central pylon and numerous stay cables. Below the bridge, a complex highway interchange with multiple lanes and overpasses is visible. The background is filled with a dense urban landscape of various high-rise buildings and apartment blocks under a hazy sky. A semi-transparent black box is overlaid on the center of the image, containing the title text.

Part 1: GIF Intro

Climate Finance Challenges in Infrastructure

Sustainable infrastructure is key

to delivering inclusive economic growth, social progress, and climate action in line with the SDGs and Paris Agreement.

Sustainable infrastructure is needed now more than ever for emerging markets and developing economies. **Spending need is 4.5% of GDP to achieve the SDGs and limit climate change to 2°C.**

Investment needs reach US\$1 trillion annually in emerging markets and developing economies

There's impetus to direct more of the **US\$120 trillion** of assets under management of banks and institutional investors towards developing countries

Public budgets are insufficient to meet infrastructure investment and public service needs. This is exacerbated by multiple crises.

Leveraging public and concessional funds from Private Capital Mobilization is critical but has its challenges:

CHALLENGE 1

Inadequate enabling environments and institutional foundations upstream to unlock investments at scale

CHALLENGE 2

Dearth of investment opportunities and 'shovel ready' projects at scale due to lack of capacity to prepare projects that are attractive to the private sector

CHALLENGE 3

Lack of comprehensive and flexible de-risking tools that can be deployed at scale both at the project- and portfolio-level

<1% of assets under management (AUM) by institutional investors in OECD countries is allocated to infrastructure, even less so in developing countries

Global Infrastructure Facility (GIF) Vision & Mission



**Connecting
public and private institutions to
drive better
infrastructure investment**

We are a global collaboration facility providing customized project preparation and blended finance solutions to EMDE countries for improved infrastructure service delivery through private participation



GIF at a glance - The only global multilateral public-private collaboration platform to prepare sustainable, resilient, low-carbon and inclusive infrastructure for private investment at scale

1) Upstream Advisory Window (UAW)



2) Downstream Financing Window (DFW) (Under development)



Current Funding Partners



Private Advisory Council (AC) Partners

>US\$18 trillion AUM)

- Institutional Investors**
AIG | Allianz | Amundi Asset Management | APG Asset Management | AustralianSuper | AXA SA | BlackRock | Caisse de dépôt et placement du Québec | Clifford Capital | Liberty Specialty Markets | Macquarie Group Ltd. | Meridiam | MetLife | Munich Re | Natixis | Partners Group | QIC Ltd | Swiss Re Ltd
- Commercial Banks**
ANZ Bank | BNP Paribas | Citibank | DBS | HSBC Bank PLC | Industrial and Commercial Bank of China | JP Morgan Chase | Mizuho Bank | MUFG Bank | Santander Global Corporate Banking | Standard Bank of South Africa Limited | Standard Chartered Bank | Sumitomo Mitsui Banking Corporation | UBS
- Development Finance Institutions, Regional Development Banks, and State Development Banks**
Export Development Canada (EDC) | Financiera de Desarrollo Nacional (FDN) | Japan Bank for International Cooperation (JBIC) | Japan International Cooperation Agency (JICA) | Private Infrastructure Development Group (PIDG)
- Other Organizations and Associations**
Global Infrastructure Basel Foundation | Global Infrastructure Hub | Global Real Estate Sustainability Benchmark (GRESB) | Infrastructure Asia | Institute of International Finance (IIF) | International Federation of Consulting Engineers (FIDIC) | Long-Term Infrastructure Investors Association (LTIIA) | OECD | Sustainable Infrastructure Foundation (SIF-IISS) | World Pension Council
- Observers**
Bechtel | EDHEC - Risk Institute | Global Commission on Adaptation | HKMA | Infrastructure Financing Facilitation Office (IFFO) | KPMG | McKinsey | Moody's | PwC | S&P | GIZ

MDB Technical Partners



GIF is a key **Enabler for PCM at scale** to meet the SDGs and Paris Agreement in line with the **MDB Evolution Roadmap** with a high leverage effect of public funds:

US\$1 of support from the GIF has mobilized US\$100 in actual private capital (excl. commercial DFI investment) at financial close

GIF Solutions Across the Lifecycle

CHALLENGE 1

Inadequate enabling environments and institutional foundations upstream to unlock investments at scale



SOLUTION | GIF is piloting targeted TA in selected countries through proposed **Country Mobilization Platform** and CFLI pilots to address selected enabling environment issues at upstream stage.

upstream work

CHALLENGE 2

Dearth of investment opportunities and 'shovel ready' projects at scale due to lack of capacity to prepare projects that are attractive to the private sector



SOLUTION | **Amplifying GIF's validated business model: project preparation support to governments in coordination with MDB partners.** GIF brings financial resources and technical expertise to build pipelines of bankable infrastructure projects that are attractive to the private sector and further develop MDB capabilities for PCM.

GIF core business

CHALLENGE 3

Lack of comprehensive and flexible de-risking tools that can be deployed at scale both at the project- and portfolio-level



SOLUTION | GIF is piloting complementary and innovative downstream finance facilities to address target risks and fill the gaps in the market. Exploring new portfolio mobilization platform in consultation with external partners.

downstream finance

The GIF is a Crucial Enabler of the MDB Evolution Roadmap and Private Capital Mobilization (PCM)

GIF TRACK RECORD

166	Project approved to date (77 completed, 89 still ongoing, 13 cancelled)
\$3B/ \$10bn	of private investment mobilized at financial close; \$10bn expected at commercial close
16/ 21	GIF projects to date that have reached financial close / of the 21 have reached commercial close
15%	of IBRD/IDA's total mobilized private capital (FY18-FY22)

GIF VALUE-ADD



Early identification of PCM opportunities and integration of private sector perspective based on expertise and skills for private sector transactions



Flexible instruments tailored to the needs of country clients and local projects



Pipeline of bankable, well-prepared projects



Contributing to global public goods (climate change, fragility, inclusion)



Support country led platforms and programs with high PCM potential



Strong connections with private sectors and financiers

GIF - A Diversified Global Portfolio

AS OF 08/31/2023
BY VALUE OF APPROVED FUNDING
SINCE INCEPTION



Activities **166***
in Latin America **29%**
in Africa **22%**

MNA **16%**
ECA **16%**
EAP **14%**
SAR **3%**

* NET OF CANCELLATION

Actual PCM:

16 GIF-supported projects
reached financial close

US\$3.1B
in private investment mobilization
(excl. commercial DFI investment)



Partners

IFC **44%**
WB **31%**
EBRD **11%**
IDB **7%**
AfDB **4%**
ADB **2%**
AIIB **0.3%**
MIGA **0.1%**



Climate-Smart
79%



Connectivity &
Integration
50%



Transport **41%**
Energy **34%**

Water, Sewage, & Sanitation **9%**
Social Infrastructure **6%**
ICT **5%**
Multi-Sector **4%**
Municipal Solid Waste **1%**

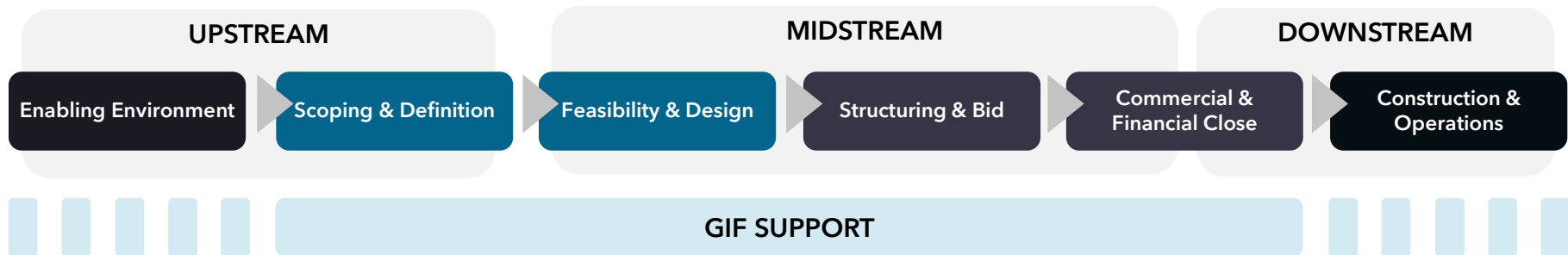


Exposure in LIC & L-
MIC Combined **57%**

LIC **12%**
L-MIC **45%**
U-MIC **40%**
HIC **3%**

The GIF Provides Flexible, Targeted Products Across the Project Lifecycle

The GIF provides both **funding** and **hands-on technical expertise** and **tools** to client governments and MDB partners across the upstream-midstream-downstream project lifecycle to catalyze increased private capital mobilization for the SDGs and Paris Agreement.



UAW (Upstream Advisory Window)

GO-DEEP Assessment

- Diagnostics & examinations of policies and regulations for specific industries

PRA (Project Readiness Assessment)

- De-risking tool to assess “readiness for market” of an infra program or project

PDA (Project Definition Activities)

- Infra program/project planning and prioritization

PDA

- Pre-feasibility studies (market, technical, E&S, climate, legal & regulatory, etc.)
- Cost-benefit and Value for Money analyses
- Design and appraisal
- Preliminary structuring
- Choice of procurement
- Early market soundings

PPSA (Project Preparation and Structuring Activities)

- Full feasibility studies
- Risk allocation and structuring
- Market soundings/ roadshows
- Contract development and tendering
- Support through commercial and financial closings

DFW (Proposed Downstream Financing Window)

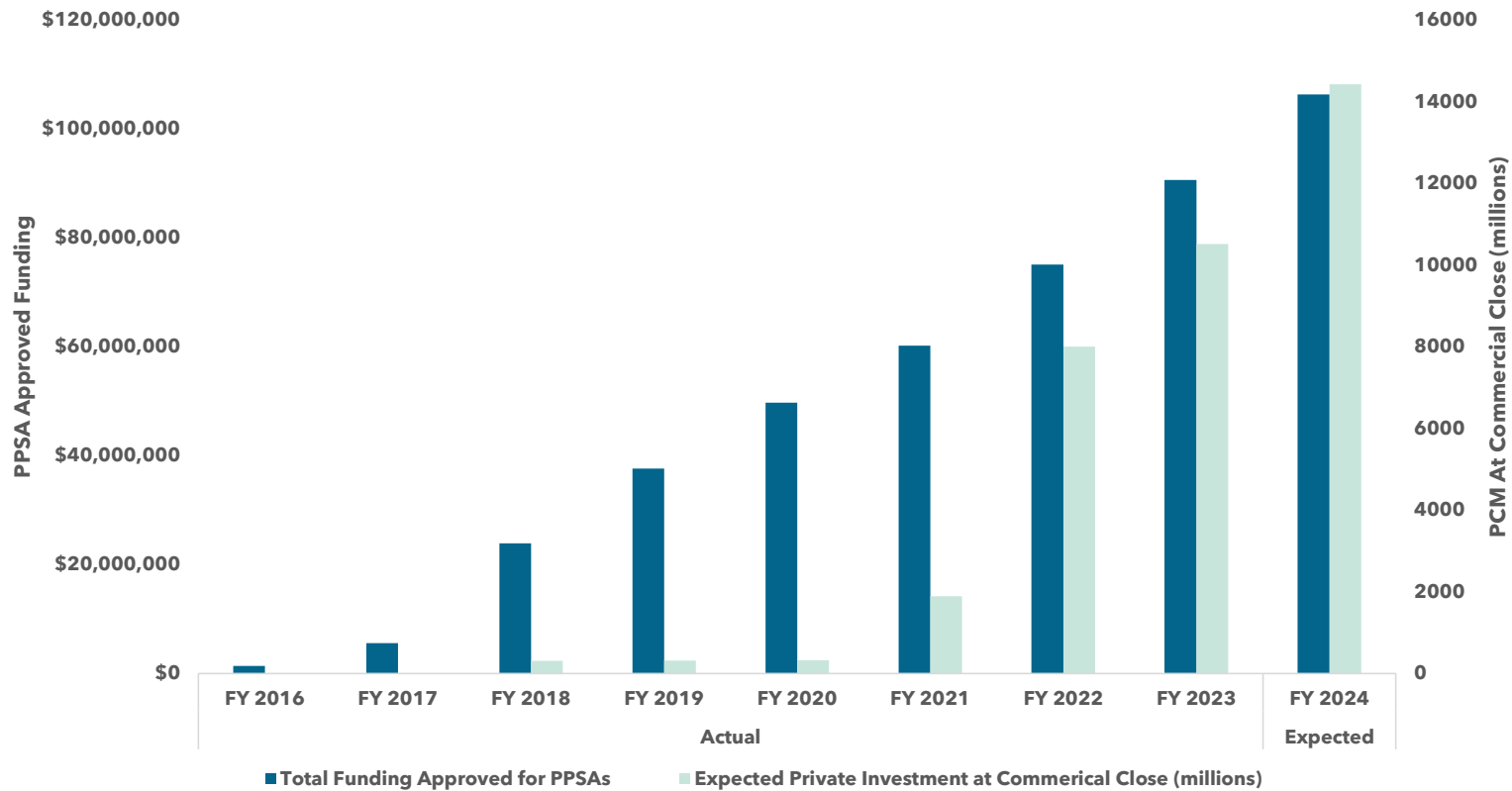
- Financial instrument to be designed based on market gap and additionality considerations

Country platforms

- Mobilization platforms at country level to enable institutional investors to co-invest with multiple MDBs in an efficient and replicable manner

MATURING PORTFOLIO REACHING COMMERCIAL CLOSE

AS OF 08/31/2023
CUMULATIVE SINCE INCEPTION



KNOWLEDGE, PARTNERSHIPS & COMMUNICATIONS UPDATES

931 Developers, investors, and lenders engaged for **183** market soundings

26 Global initiatives & partnerships fostered

24 Reports authored/co-authored

82 Editorials

15 Advisory Council Meetings

28 Regional roundtables & webinars



KNOWLEDGE SPOTLIGHT

- Launch of Climate Toolkits for Infrastructure PPPs in April 2022 and 5 sector-specific toolkits in April 2023
- InfraTech toolkit and compendium of case studies to be released in FY24
- Gender toolkit to be delivered in FY24, following early findings G20 report



PARTNERSHIP SPOTLIGHT

GIF and its co-chairs, Macquarie and HSBC selected **Bloomberg LP and Global Infrastructure Basel as the FAST-Infra Sustainable Infrastructure Label Secretariat** and will continue to advise the Secretariat and support application and broad market uptake of the label (including piloting integration in GIF-supported activities). In partnership with **CFLI**, GIF supports the development of **public-private Country Platforms** in India and Colombia, promoting local investment solutions for net zero financing



COMMUNICATIONS SPOTLIGHT

The GIF Advisory Council Meeting sparked insightful conversations on the latest innovations and pathways aligned with achieving climate commitments.

The GIF also actively participated at the New York Climate Week's several high-level events, conversations and activities including an Op-ed with GIF's Partner J.P. Morgan in New York.

GIF & G20 – INFRASTRUCTURE WORKING GROUP (IWG)



2018 | Argentina: Infrastructure as an Asset Class. GIF delivers the **'G20 Principles for Infrastructure Project Preparation'** note.



2019 | Japan: Quality Infrastructure Agenda. GIF emphasizes the **best time to promote and ensure quality infrastructure is during the project planning, selection, preparation, design and structuring stages**, in line with G20 Quality Infrastructure Principles.



2020 | Saudi Arabia: Digital Infrastructure. GIF continues incorporating Infratech elements in GIF-supported projects; while also **building knowledge with key partners in this space around how Infratech should be considered in early stages of project design and structuring.**



2021 | Italy: Prioritizing project preparation. **GIF receives a formal seat at the G20 IWG.** The inaugural Investor's Dialogue Outcome Document emphasizes the importance of project preparation and calls to increase funding support to scale up the GIF.



2022 | Indonesia: Leveraging the Private Sector. GIF delivers the **Stocktake of Approaches that Leverage Private Sector Investment in Sustainable Infrastructure** as well as a **Preliminary Findings Report on Gender-Inclusive Approaches in Private Participation in Infrastructure** in collaboration with other key stakeholders including World Bank, PPIAF, GIH and OECD.



2023 | India: Urban Infrastructure: Inclusive, Sustainable and Resilient Cities. GIF supported the World Bank's **Enablers of Inclusive Cities** report and in collaboration with the OECD and GIH hosted a roundtable focusing on how infrastructure definitions and taxonomies, as well as with the IFC on scaling up private investment in urban infrastructure.

An aerial photograph of a city, likely São Paulo, Brazil, featuring a prominent cable-stayed bridge crossing a river. The bridge has a tall, slender pylon and numerous stay cables. Below the bridge, a complex highway interchange with multiple levels and ramps is visible. The background is filled with a dense urban landscape of high-rise buildings. The entire image is overlaid with a semi-transparent blue filter.

Part 2: GIF Case Studies

Bangladesh: Pipeline Creation



- GIF supporting creation of sustainable and bankable infrastructure pipeline, together with AIIB, ADB, IFC, and WB
 - PPP Authority : preparation of investable opportunities (WB)
 - Roads and Highways Authority: resilient roads and bridges (ADB and WB)
 - Port programs: design of public private engagements for port connectivity (WB and IFC)
 - Renewable Energy: roll-out of solar program
 - Digitalized healthcare (AIIB)
 - Fiber optic connectivity (WB)

Brazil: Street Lighting Program



Improving urban quality of life through a comprehensive partnership



Challenge

- Most of Brazil's 5,570 municipalities use **outdated and unreliable street lighting**, which account for 5% of the country's energy consumption and are the second largest municipal expenditure
- Modern infrastructure can reduce up to 80% of the energy consumption, reducing costs and emissions
- **Municipality's fiscal constraints** for investments

Solution

- A **comprehensive partnership with IFC, WB and the Brazilian Government**, through SPPI (Special Secretary of Investments Programs) and Caixa (one of the largest dev. banks of Brazil)
- Structuring a **program of 12 transactions** that will attract private sector solutions and serve as a pilot for the future

Expected Impact of the pilot phase


- **7 million people** benefited and **US\$ 175mn in private investments**
- **60% energy consumption** reduction on average, reducing 17 metric tons of CO2 emissions per annum
- **40% cost reduction** to the municipalities
- **Document standardization** and development of guide
- Caixa to acquire **structuring capacity** and independently replicate the Program in hundreds of municipalities
- Improving **quality of life**, public space and security


Malawi: Mpatamanga 350 MW Hydro





The 350MW hydropower project on the Shire River will double Malawi's hydro capacity and provide much-needed grid stability, which will in turn support significant new solar PV capacity in the future

 Relationship and Commercial Agreement signed in September 2022 between Government of Malawi (30%), IFC (15%), and a consortium of leading international hydro developers EDF and Scatec (55%).

 US\$530M of expected investment (incl. IFC & private capital) and US\$300M of IDA credit and guarantee. Mpatamanga is the single largest PPP project in Malawi, one of the world's poorest countries with a grid-connection rate of only 12%.

 GIF provided US\$4.9 million starting in 10/2018 to enable the GoM to benefit from top-tier independent advisors with duty of care solely to the GoM and provided oversight during the joint development phase.

 The project supports climate change mitigation as 1,600GWh/annum of power supplied by the project would avoid the equivalent of approximately 1.2million metric tons of CO2 emissions per annum.

 The levelized cost of power is expected to be 35-50% cheaper than fossil fuel alternatives, implying a reduced fiscal exposure of the GoM to the power/energy sector.

Unique and Innovative project structure - the initial joint development approach with IFC, GoM and a specialist developer in JV has been a novel approach for the region that could be replicated for large and complex infrastructure PPP projects.

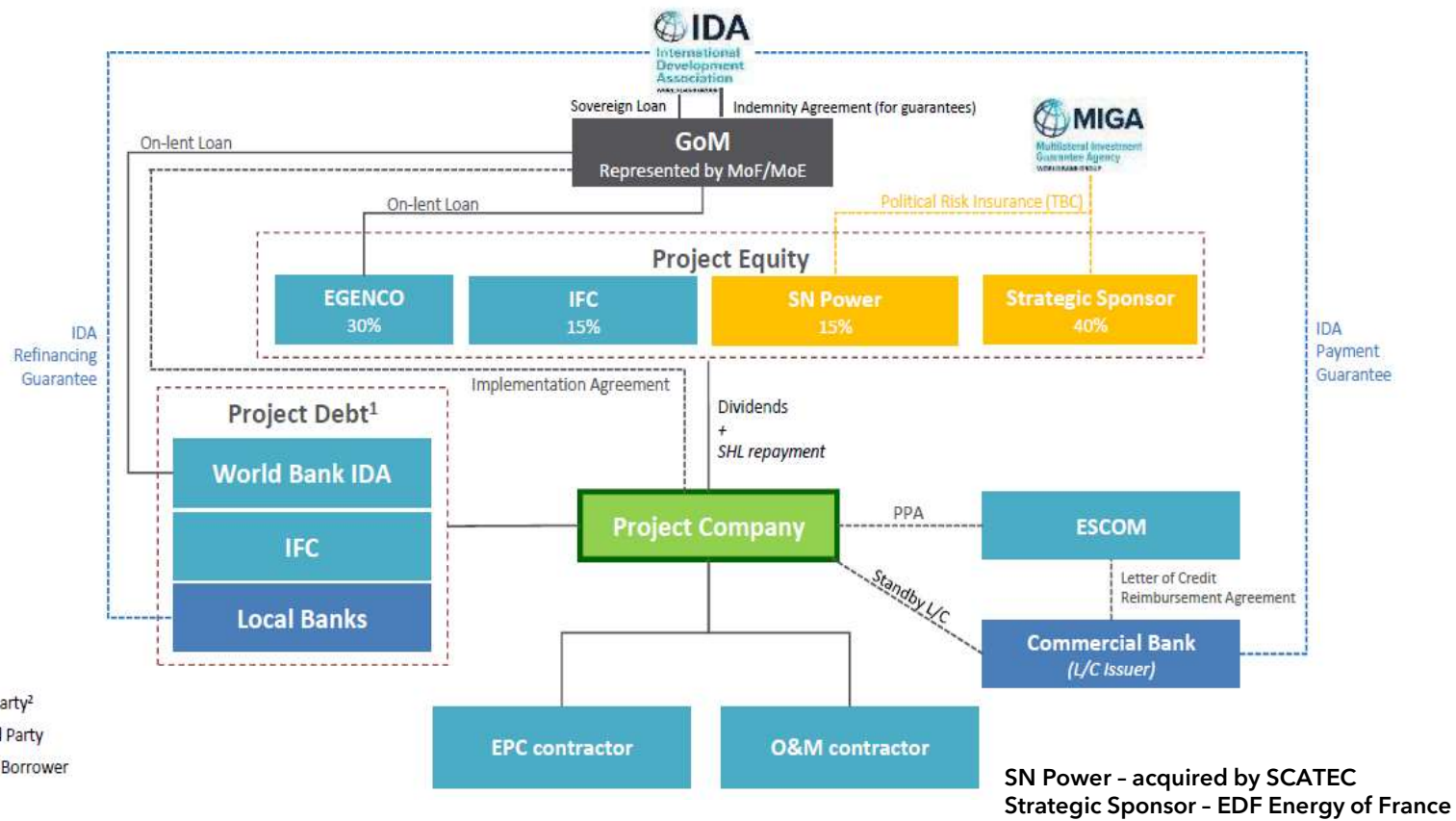
GIF support was a key factor success - with the provision of competent independent specialist advisors for and funding GoM's obligations under the JD as well as the GIF team's honest broker coordination role amid multiparty/institutional participation

Continuity despite political changes attests to the project's alignment with national development plans and the validity of project selection/eligibility criteria (i.e. national priority as most economic project in least cost sector power development planning approach)

Malawi: Mpatamanga Hydro Project Structure



PROJECT STRUCTURE



Senegal: Dakar Bus Rapid Transit (BRT)



The Dakar BRT, an innovative project that is unprecedented in Africa, includes the acquisition, operation and maintenance of a clean transport network of 100% electric buses, batteries and depots



In March 2022, CETUD and a consortium led by Meridiam and its partners Keolis and Fonsis signed a 15-year concession contract, concretizing the **first electric BRT to be structured under a PPP in Africa**. Operations are expected to start by end of 2023.



US\$200M of expected private investment in the rolling stock with a fleet of over 120 electric buses. The infrastructure financing package comprised of US\$300M of IDA credit, US\$30M of Green Climate Fund grant, US\$31.5M loan from EIB, along with US\$54M of commercial lending and contributions from the GoS.



GIF provided US\$490,000 in March 2017 to **enable the GoS to benefit from top-tier advisors** to implement the complex transaction.



The project supports **climate change mitigation**, avoiding approximately 59,000 metric tons of CO2 emissions per annum.



The BRT is expected to **halve the travel time** on the corridor (45-50 minutes vs. 90 minutes on average), benefitting **300,000 passengers daily** across 14 municipalities on 18.3 kms of dedicated BRT lanes.

A first of a kind continental sustainable mobility project - The project is the first BRT project in Senegal and western Sub-Saharan Africa and is designed to address transport and decarbonization challenges at the same time. A **replication effect** is expected as a result of the project's success.

A 2015 mandate to reach commercial close in 2022- A first of a kind PPP project in the continent naturally faced several challenges, which became even more complex with the introduction of clean mobility solutions at an affordable price. The natural time-consuming structuring efforts were combined with a long negotiation process between the GoS and preferred bidder. **Resilience and determination** from stakeholders were key to overcome obstacles.

A project with a social nature - Beyond the expected creation of 1,000 direct jobs and the increased socio-economic benefits, social affordability is at the core of the project, as the financial structuring of the contract provides that the populations eligible for social tariffs shall benefit of a **50% price reduction**.

Green Hydrogen: GIF Portfolio and Pipeline

Namibia



- Supporting AfDB/ALSF, GIF is co-funding for the transaction advisory mandate, to **provide the government with expert transaction advisory services support in its negotiations** with the preferred bidder/sponsor (Hyphen Consortium)
- Key to attaining the signing of a Feasibility and Implementation Agreement in May 2023.
- GIF's support will continue over the project's preparatory phase (feasibility stage, FEED, etc.) through to commercial & financial close

Egypt



- Egypt signed framework agreements with 9 consortiums incl. major international developers, to develop facilities in the Suez Canal Economic Zone.
- GIF is working with AfDB/ALSF to co-fund **legal DD run to develop legal and contractual frameworks underpinning Egypt's Green Hydrogen program.**

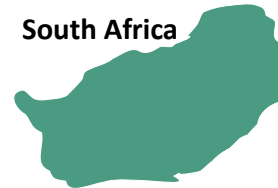
Tunisia



- GIF co-funding for an **IFC transaction advisory services mandate for a Green Phosphate PPP program**, including a slurry pipeline, a desalination plant, and **a pilot green ammonia plant.**
- GIF's support focuses on project preparation/feasibility, transaction structuring, tendering/procurement and negotiations support till financial close
- Could be used to produce 50,000 t/year of green ammonia, key ingredient in fertilizer production, potentially to be used for fertilizer industry decarbonization.

Other projects in the pipeline

South Africa



Chile



Egypt



Indonesia: Legok Nangka Waste-to-Energy PPP



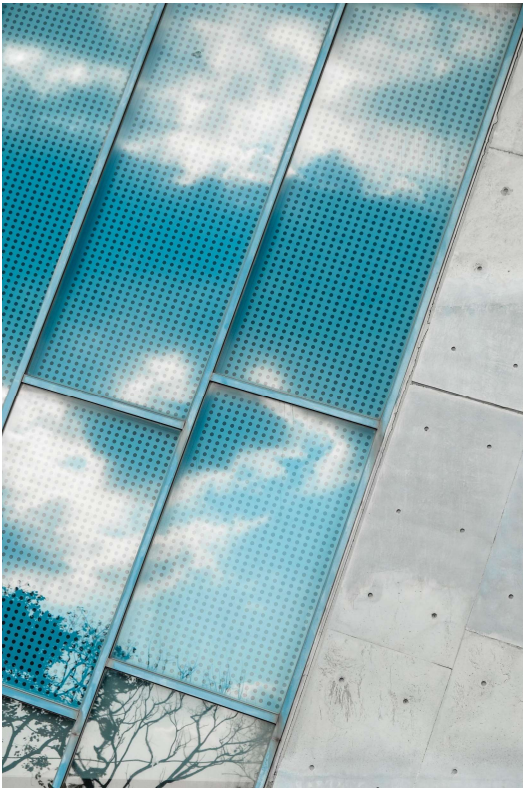
- On **9 August 2023**, the West Java Province announced the **preferred bidder**, the consortium led by **Sumitomo Corporation in partnership with Hitachi Zosen Corporation and PT Energia Prima Nusantara (Consortium)**, for the **Legok Nangka Waste management PPP**.
- The Project will provide a facility for the final treatment and processing of **ca. 2000 tons/ day of municipal solid waste** from six participating municipalities of the Greater Bandung Area in West Java, Indonesia, and add about **25MW of generation capacity** to the grid.
- Japan International Cooperation Agency (**JICA**) and, **IFC, with the support of GIF**, have provided PPP transaction advisory services, including Project structuring and tendering, to the West Java Regional Waste Management Agency **since 2019**.
- The Project is expected to mobilize over **\$200 million of private capital** and the **pilot waste-to-energy PPP in Indonesia** is expected to be **replicated** in other parts of the country.
- **Commercial close** is expected to occur by 2Q 2024 and is **conditional upon the finalization of key documents**.

Madagascar: 120MW Volobe IPP Project



- On May 26, the Republic of Madagascar, Jirama, and Compagnie Générale d'Hydroélectricité de Volobe (CGHV) **signed the concession agreement and power purchase agreement (PPA) for the 120 MW Volobe hydroelectric power plant project** to be built on the Ivondro River, near Toamasina.
- Commercial close milestone was made possible through the **joint support of the African Legal Support Facility (ALSF) and the GIF, who provided transaction advisory services** (legal, technical, financial/commercial) to the government of Madagascar throughout the process of preparation, transaction structuring and negotiation of the project agreements.
- **The concession agreement and PPA signing marks a significant milestone towards the actualization of the US\$380 million project** which is expected to commence operation by 2028

Seychelles : 5MW Floating Solar IPP Project



- On April 4, Qair Group, an **independent renewable power producer, and Seychelles' Public Utilities Corporation (PUC) signed Seychelles' first Power Purchase Agreement (PPA)**.
- The signing, which occurred on the zero-emission vessel Energy Observer, **grants Qair a concession to construct and operate a 5.8 MWp floating solar plant** on Providence's lagoon to provide renewable energy to Seychelles' grid.
- This project would **enhance energy security, generate employment, and stimulate economic growth**, aligning with Seychelles' carbon neutrality goals.
- The **GIF and the ALSF proudly provided transaction advisory services support for the government of Seychelles throughout the preparation**, tender, and negotiations stage of this key project, which is a marker for the country's sustainable transition.

India: Climate Finance Leadership Initiative (CFLI)



- CFLI India is in its second year of engagement and the GIF continues to be an active member of the CFLI secretariat and acting as a connector between the private sector and MDB partners.
- CFLI India has focused on 4 transformational workstreams



Enabling Infrastructure for Renewables



Scaling Electric Mobility and Charging Infrastructure



Investing in a Circular Economy



Decarbonization with Green Hydrogen

CFLI India Progress (Mar'23)



- India E-Mobility Financing Program (US\$1.5 B) Macquarie & Green Climate Fund (GCF)
- ACE EV Finance Scheme of Tata -SBI
- Telangana, Hyderabad, Maharashtra discussions on water treatment financing schemes
- Green hydrogen hub study

Carbon Market Forum: Connecting stakeholders to facilitate transactions



Voluntary Carbon Markets

Potential to **mobilize private capital** for climate action.

Cumulative volume at **\$8bn in 2021**, expected to be **\$50bn by 2030**.

Carbon markets remain fragmented and untapped with **information not transparently available** between potential buyers and sellers of ERCs.



Carbon Market Forum

Support dialogue across buyers and sellers to identify demand & supply side issues, **co-develop solutions** for **transacting in ERCs**

- i. Supply of ERCs from MDB projects**
- ii. Monetize ERCs and use of digital infrastructure**



Global Infrastructure Facility

GIF

A **G20** INITIATIVE

Well positioned for **market making as collaboration platform** for **TPs** as well as **public and private stakeholders**

Global focus & expertise at project-level to anchor the dialogue on **transactions**

Complementary to WB climate programs such as CMC, PMI**



Global Initiative

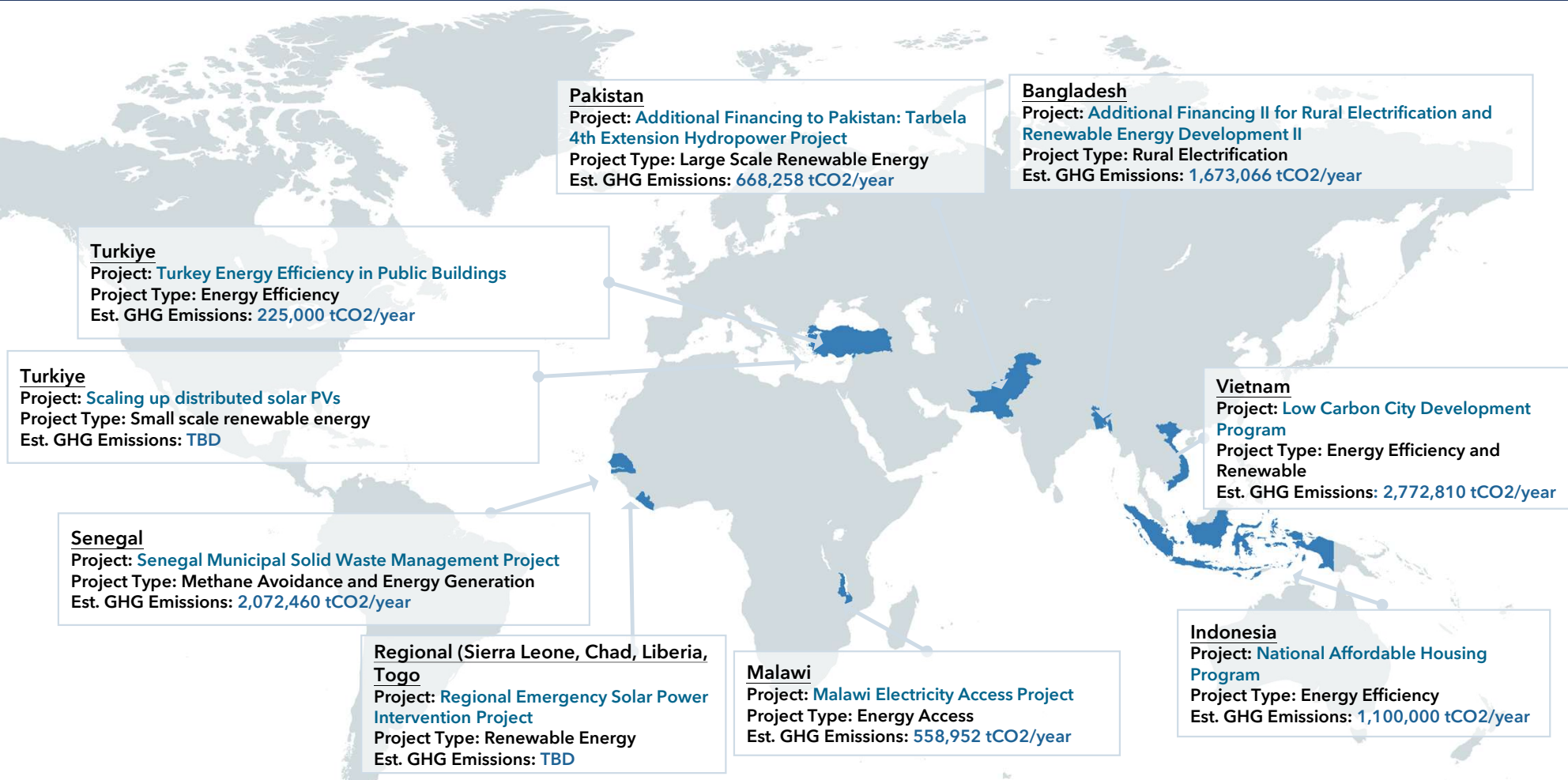
Piloted in Singapore leveraging Singapore's carbon market ecosystem

Ongoing discussions with **NCCS*** to hold **first meeting in 2023**.

Beginning with WBG pipeline projects/clients in Singapore, and expanding its reach by **inviting other MDBs and hosting across regions**

*National Climate Change Secretariat, housed in the Prime Minister's Office of the Government of Singapore, ** Climate Market Club, Partnership for Market Implementation

Carbon Market Forum: Potential Pipeline



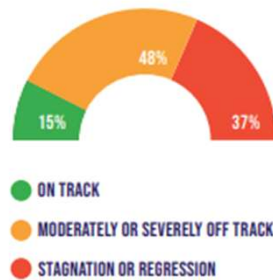
An aerial photograph of a city, likely São Paulo, Brazil, featuring a prominent cable-stayed bridge crossing a river. The bridge has a tall central pylon and numerous stay cables. Below the bridge, a complex highway interchange with multiple overpasses and ramps is visible, with cars on the roads. The background is filled with a dense urban skyline of various high-rise buildings under a hazy sky. A semi-transparent black box is overlaid on the center of the image, containing the text 'Part 3: GIF Scale Up'.

Part 3: GIF Scale Up

The World is Off-Track to Meet the SDGs & Paris Climate Goals by 2030 - A Transformative Approach towards Private Capital Mobilization (PCM) for Infrastructure is Required to Fill the Gap

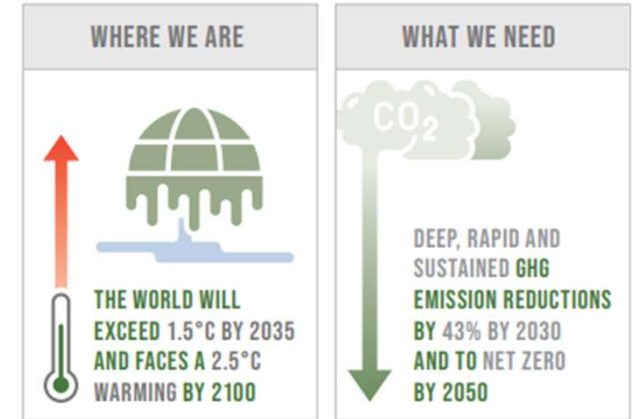
Significant delays in meeting the SDGs

A CONCERNING PICTURE OF SDG PROGRESS AT THE MIDPOINT:



BASED ON AN ASSESSMENT OF SDG TARGETS WITH TREND DATA.

Off-track on 1.5 degrees & net zero



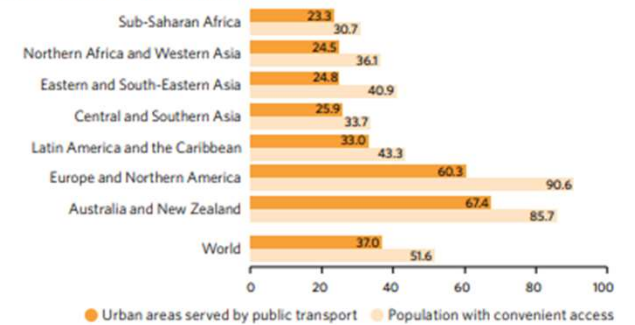
Behind on SDG7

Proportion of population with access to electricity, 2015 and 2021 (percentage)



Off-track on SDG11

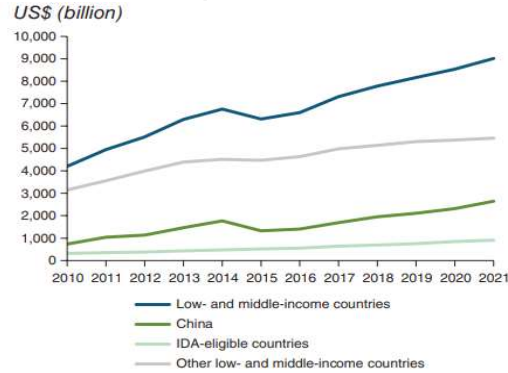
Coverage of public transport and share of population with convenient access in urban areas, 2022 (percentage)



The Current Macro-Economic Environment Enhances the GIF's Relevance

Significant fiscal constraints and higher debt levels in EMDEs call for scaling up private investment in EMDEs to meet the SDGs and climate goals

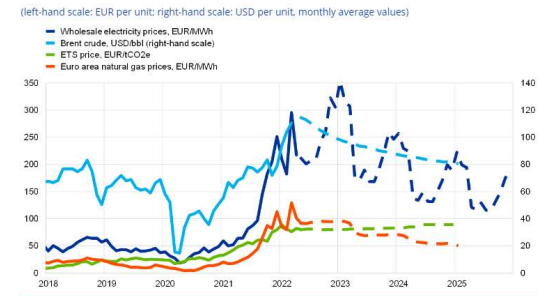
External Debt Stocks of Low- and Middle-Income Countries, 2010-21



International Debt Report 2022, World Bank

High energy prices, including for gas and oil, are an example of affordability challenges for infrastructure services in EMDEs

Pandemic-related drop in energy prices followed by substantial price increases



Eurostat, Refinitiv and ECB staff calculations

US interest rate hikes, and Russia's invasion of Ukraine, led to significant capital outflows from EMDEs, following an initial improvement post COVID-19

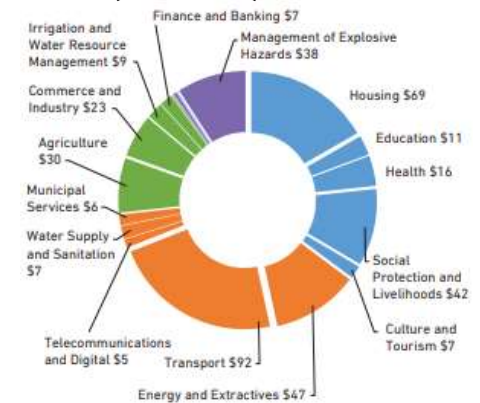
Portfolio Flows, EMDEs excluding China



Haver Analytics; IIF (database); J.P. Morgan from the World Bank Global Economic Prospects, June 2023

Ukraine's reconstruction requiring a coordinated response, with private investments, leveraging donor funds under programmatic frameworks

Total recovery and reconstruction needs (US\$ billion): US\$411 billion



Ukraine Rapid Damage and Needs Assessment, World Bank, February 2022-23

GIF Scale UP - Focus Topics towards Replenishment



1. A truly global, multilateral platform

- Balanced portfolio across technical partners
- Expansion of technical partner network



2. Enabling the MDB evolution for PCM at scale

- Growing share of projects / program moving to FC



3. An enabler for climate action

- Mainstreaming and deepening climate change mitigation and adaptation approaches across the portfolio



4. A unique approach to public-private collaboration

- At global level (diversifying the AC)
- At country level (country platforms)



5. Continued innovation

- New sectors and approaches (e.g. programs)
- New products (e.g. investment catalogues, roadshows)
- Making markets, creating infrastructure portfolios for investors



6. High development impact

- High impact countries (incl. LICs, SIDS, Ukraine reconstruction)
- High PCM potential and multiplier



7. Knowledge platform

8. Efficient operations

- Programmatic approaches
- Efficient operating procedures

Replenishing the GIF by a factor of

5X



150 projects annually, mobilizing private capital of \$15bn p.a. or more with higher replenishment

An aerial, grayscale photograph of a city, likely Rio de Janeiro, featuring a prominent cable-stayed bridge over a river. The bridge has a tall central pylon and numerous stay cables. Below the bridge, there are multi-lane highways with visible traffic. The background is filled with a dense urban landscape of various high-rise buildings. A semi-transparent black box is centered over the bridge and highway area, containing the text "Thank you".

Thank you