

# Inclusive Korea in the Anthropocene – Governing Environmental and Humanitarian Crises in a Global Age



Mike Douglass

Urban & Regional Planning  
University of Hawaii at Manoa

Presidential Commission on Policy Planning (PCPP)  
and National Research Council for Economics, Humanities and Social Sciences (NRC)  
International Conference “For Better Life: Korea’s Growth as an Innovative and Inclusive Nation”  
May 24<sup>th</sup>--25<sup>th</sup>, 2018

1. How the Anthropocene changes the discussion on Inclusion
2. Intersecting Mega-trends and scales of inclusion – humanitarian crises
3. What are the directions in linking inclusion with the Anthropocene?



# Converging Global Mega-Trends

Globalization: a process of increasing interdependencies, with global mega-trends that converge differentially over space to create locally specific problematics.

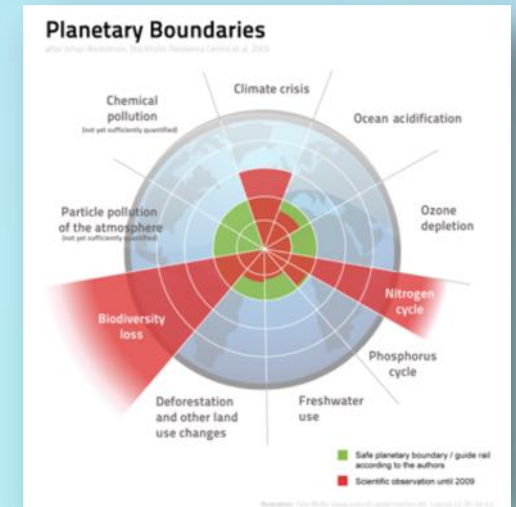
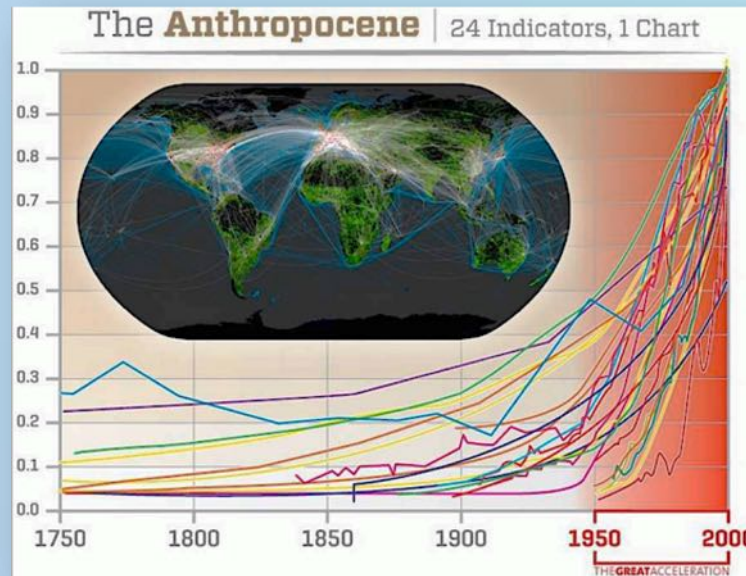
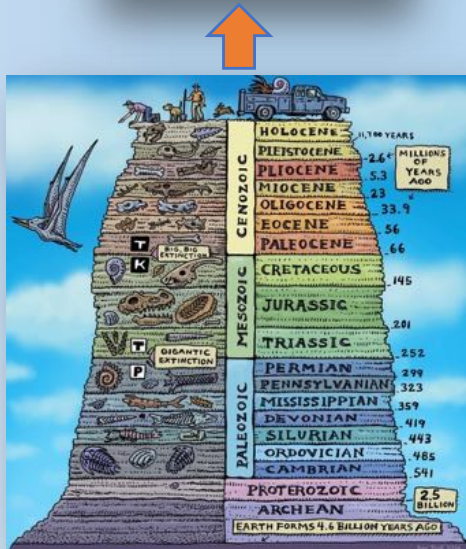
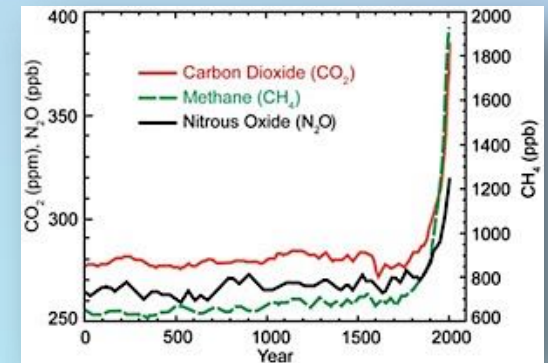


- ❖ **The Anthropocene:** climate change, environmental disasters, forced migration
- ❖ **Planetary urbanization:** rise of urban middle and working classes; civil society and non-state actors; heightened vulnerability to climate change
- ❖ **Demographic shift:** shrinking, aging populations; crises in welfare support and labor force
- ❖ **Global Migration and multi-ethnic/cultural societies:** merging of conflict, environmental and “economic” migration
- ❖ **National Governance:** retreat from democracy, border walls, privatization, rise of civil society and non-state actors.
- ❖ Artificial Intelligence/“smart” technologies/social media
- ❖ Financialization of capital.
- ❖ ...

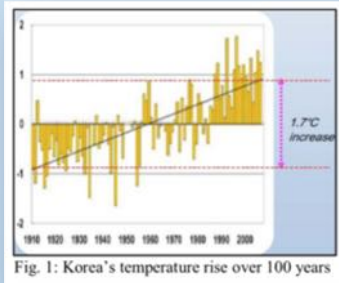
# The Anthropocene



“The current geological age in which human activity has become the dominant influence on climate and the environment”



# The Anthropocene in Korea



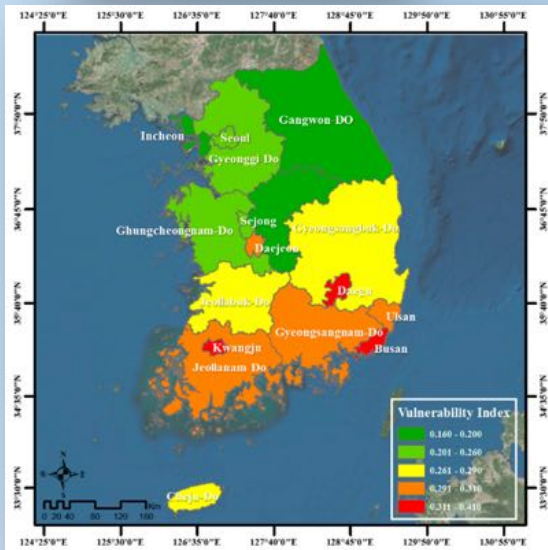
## Changing crop zones



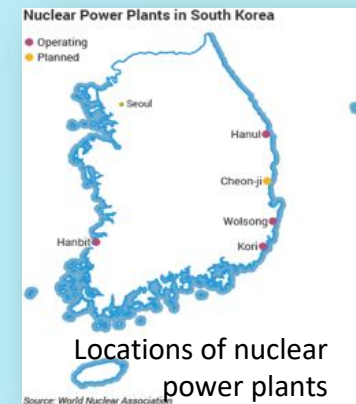
## Subtropical pest and pathogen infestations

## Sea Rise and Extreme Weather Events

- ❖ Flooding, droughts
- ❖ Serious loss of vast tidal flats and their fishing ecologies
- ❖ Dislocation of coastal populations
- ❖ Tidal surges and exposure to coastal flooding
- ❖ Desertification of ocean floor with destruction of sea life

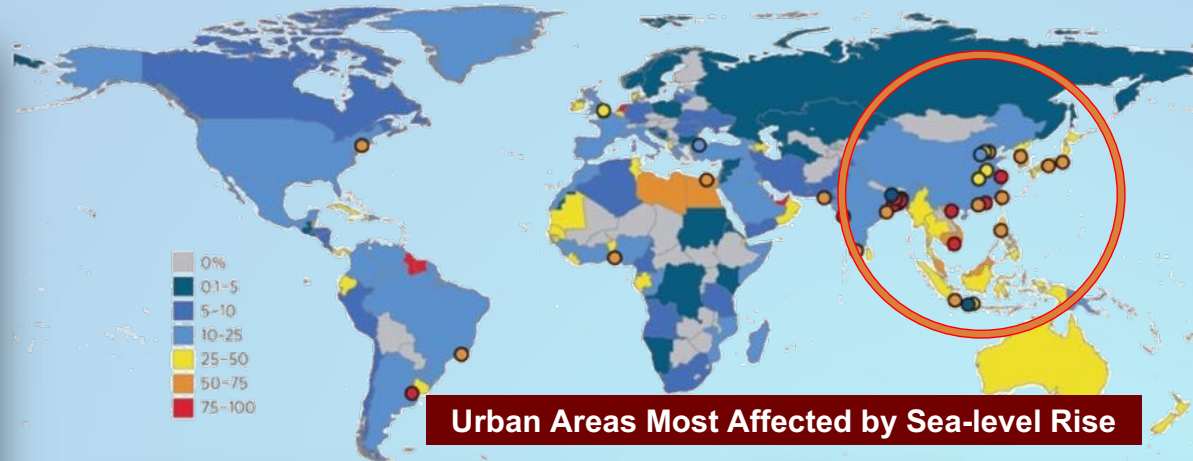


## Changing Temperatures and Heat Waves

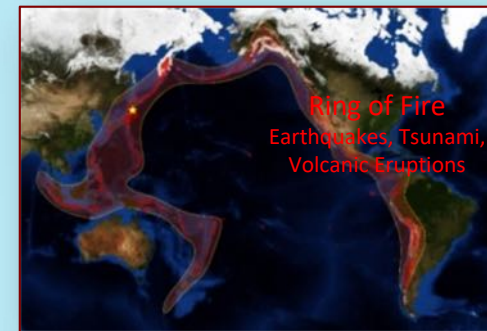
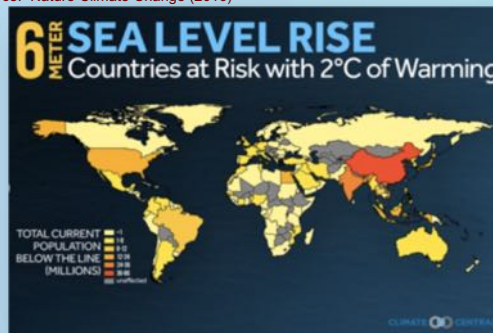


# Asia's Urban Transition

*Shifting the world's population to highly vulnerable coastal regions*



Source: Nature Climate Change (2016)



44% of all people on Earth live within 100 miles of a major shoreline.

# The Vulnerability of Coastal City regions in Asia

Inundated areas with total ocean glacier melt



77 Cities

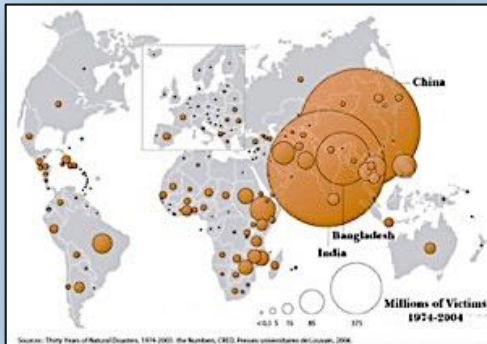


120 Million Population

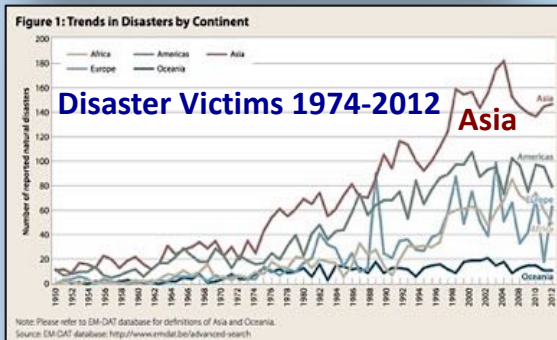
# The Urbanization of Disasters in Asia in the Anthropocene

90% Global environmental disaster victims are in Asia

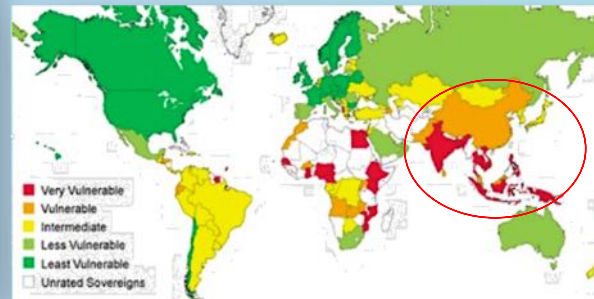
Most of Asia's megacities are "Critically Unprepared" for major floods



- ❖ 2030-2050: climate change will cause approximately 250,000 deaths per year, from malnutrition, malaria, diarrhea and heat stress.
- ❖ The direct damage costs to health is estimated to be between US\$ 2-4 bn. /year by 2030. (WHO 2016).



Climate Change Vulnerability

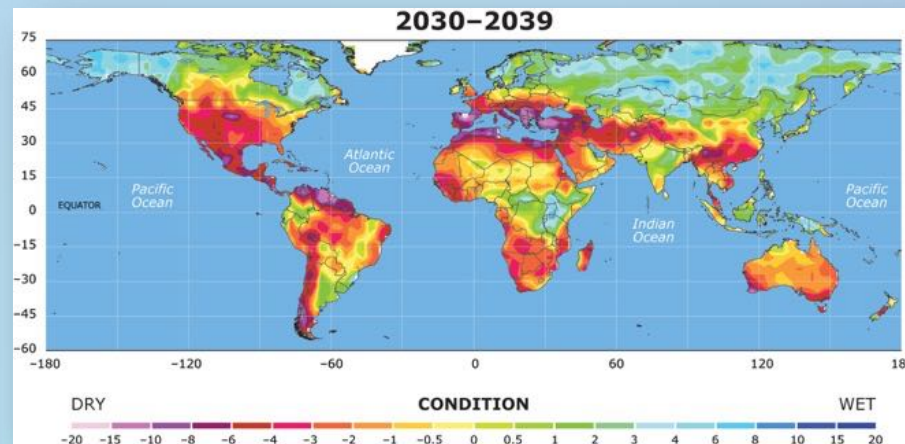
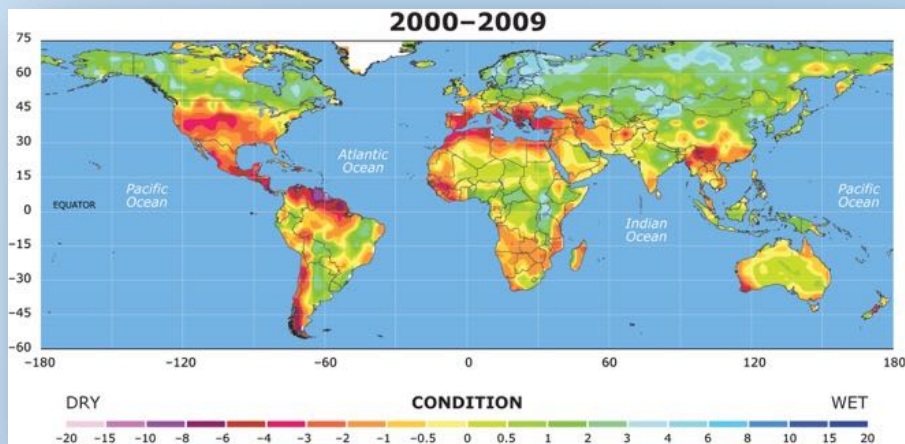


Centers of Floods 1985-2010

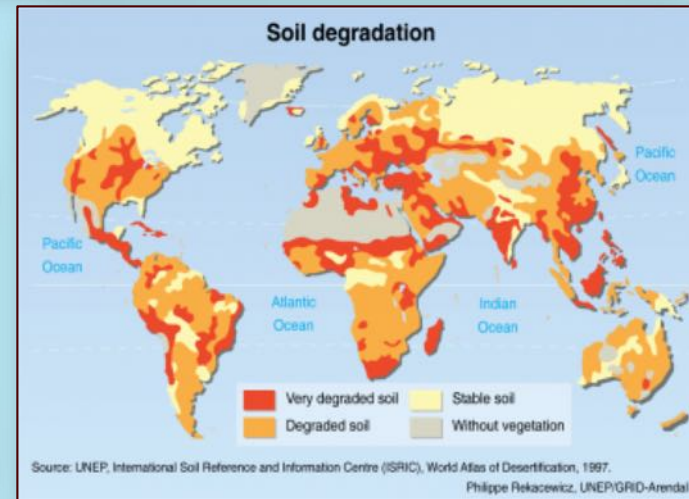
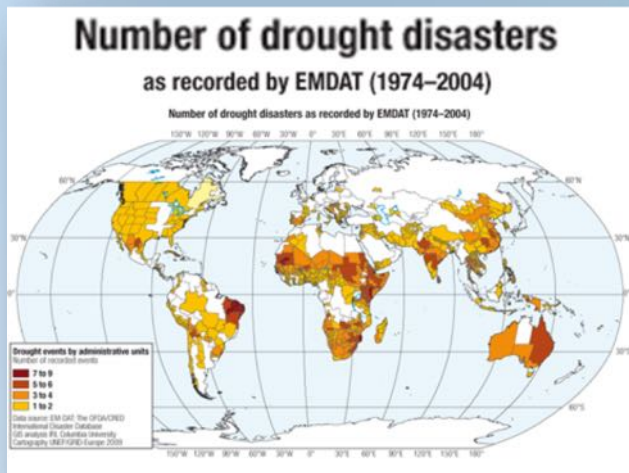


Climate change is planetary and will generate immense impacts for generations to come. There are no short-term solutions.

# Climate (Change) – Heat Waves and Droughts



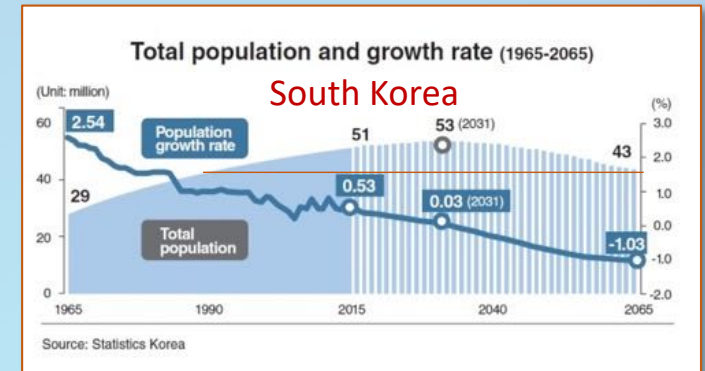
Desertification, droughts and lack of water are massively contributing to human mobility



# The “Demographic Winter”

“By 2030 eighty percent of the G20 countries will be facing an unprecedented population decline that will change the global economy profoundly.” (OECD 2018)

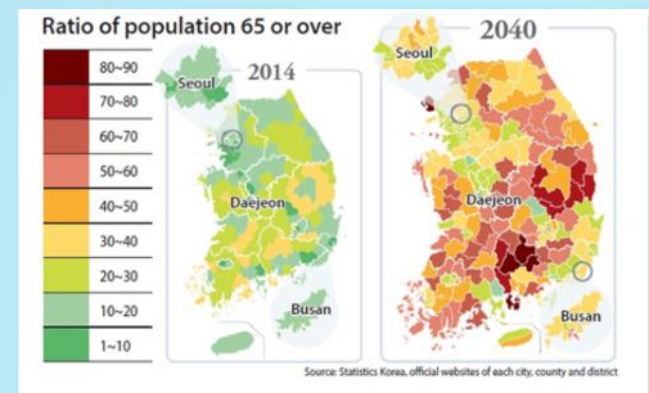
South Korea's working-age population is shrinking much faster than in other OECD countries.



2050: 40% Population > age 65

## Impacts

- ❖ Rapidly aging society with fewer and fewer children
- ❖ Shrinking labor force, labor shortages
- ❖ Rising dependency ratios and welfare crises
- ❖ Provincial depopulation; heightened spatial polarization of society and economy
- ❖ Social problems of loneliness, lack of social support systems
- ❖ Challenging social capacities to adapt to climate change



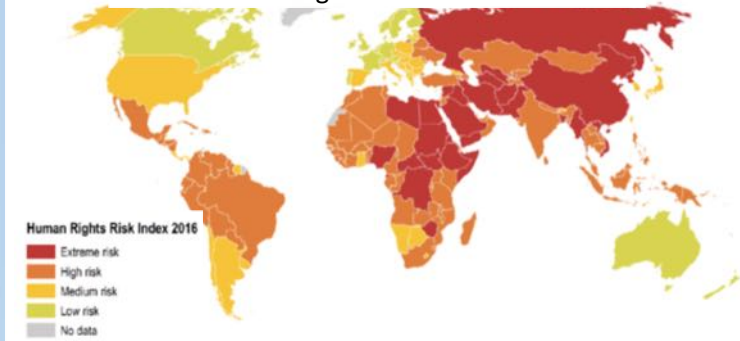
# Governance and Inclusion

United Nations: “Democracy is in Retreat” throughout the world

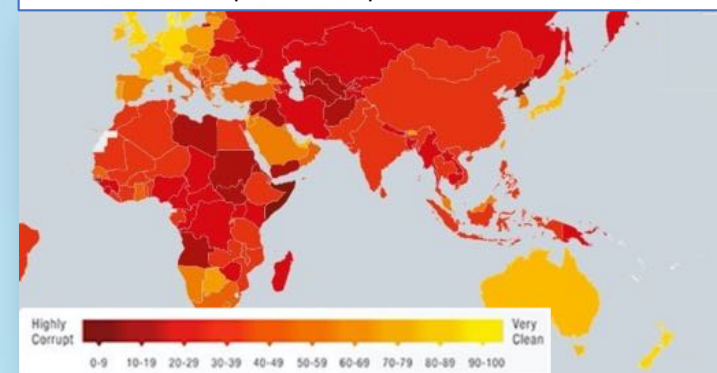
2017

- ❖ Largest 10-Year Score Declines in Freedom in the World
- ❖ Dramatic declines in freedom have been observed in every region of the world (Freedom House: Freedom in the world 2017)

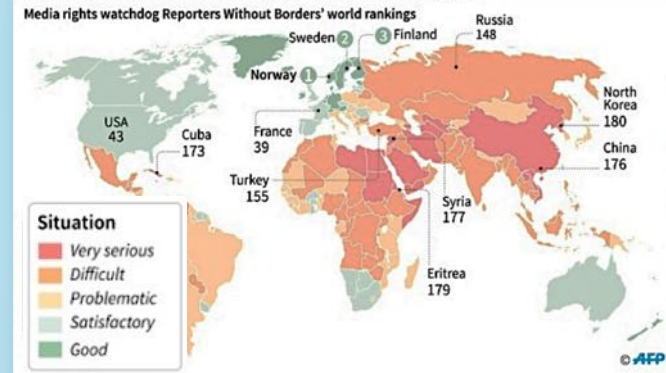
Human Rights Risk Index 2016



Corruption Perception Index 2016



Press freedom ‘never under so much threat’

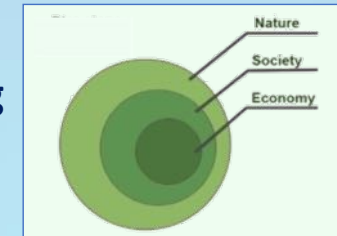


Main increases: repression of freedom of speech; ethnic and sectarian conflicts; a lack of worker protection; and **competition for land and water between local populations and business**

# Pathways from Inclusion to Environmental Wellbeing

## Scaling up from city to nation to global scales

Humans are part of nature;  
planetary environmental flourishing  
depends on placing severe limits on  
human appropriation of nature



Shared belief in the common  
good, and in flourishing  
through creative engagements  
among people, including the  
stranger



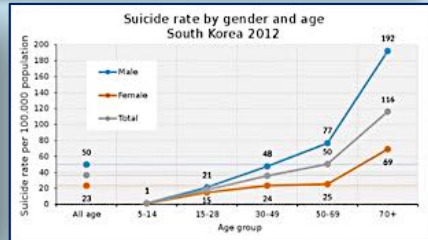
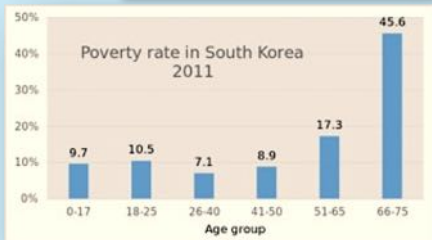
Fairness in the distribution  
of wealth, opportunities,  
and privileges in society

The right to political participation  
and representation as an equal  
member of society

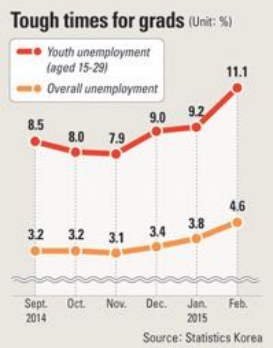
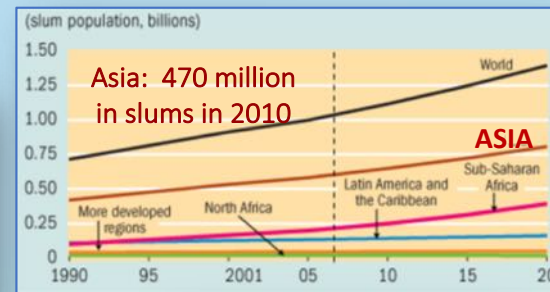
# Social (Distributive) Justice

## • Precariatization and Poverty

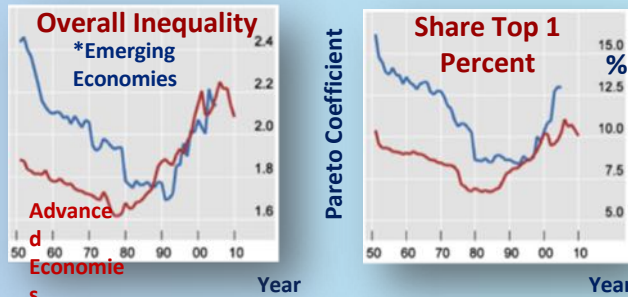
❖ Part-timer and sub-part-time labour = 1/3 Korea's wage workers (2009).



## • Planet of Slums



## • Increasing Inequality



\*Argentina, India, South Korea, Malaysia, Singapore, South Africa

## Relative poverty rate in Korea (Unit: %)

| Category                                    | 2012 (%) | 2013 (%) |
|---|----------|----------|
| Total                                       | 14.0     | 13.7     |
| Households with a female head of the family | 31.8     | 32.4     |
| Children                                    | 9.4      | 7.9      |
| The elderly                                 | 48.0     | 48.0     |
| The employed                                | 8.1      | 7.8      |
| Single-parent households                    | 21.7     | 18.5     |
| Single-person households                    | 48.1     | 47.2     |

Source: Korea Institute for Health and Social Affairs

# Civic Culture & Conviviality

“In human happiness, creative activity and a sense of community count for at least as much and maybe more than material standard of living.”

- *Lisa Peattie*

## Convivial Spaces

- Open, public spaces
- Human scale
- Mixed use
- Local cultural practices
- Place-making/vernacular
- Inclusive
- Allows for spontaneity



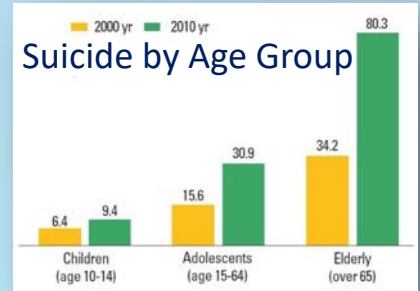
# Livability and Conviviality

“Mega-projects are altering the historic meaning of the city, with deep implications for equity, democracy and rights.”

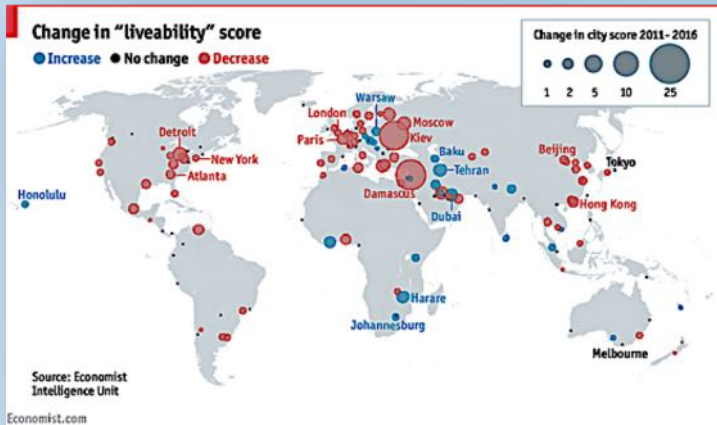
- ❖ They are killing the urban tissue of little streets and squares, street-level shops and modest offices, and are leading a reduction in public buildings and a thinning in the texture and scale of spaces previously accessible to the public *Saskia Sassen(2015).*

## Well-being rankings in OECD's 'How's Life' report

- |                |                 |
|----------------|-----------------|
| 1) Denmark     | 8) Canada       |
| 2) Iceland     | 9) Netherlands  |
| 3) Switzerland | 10) New Zealand |
| 4) Finland     | 12) U.S.        |
| 5) Israel      | 26) Japan       |
| 6) Norway      | 27) South Korea |
| 7) Australia   |                 |



Smart phone/games addiction



“Loneliness is one of the biggest health threats facing South Korea.” (78 on loneliness scale of 100) as “human interaction has been reduced significantly.” (Korean Clinical Psychology Association 2018)

*Honjok, honbap, Black Day (14 April)*

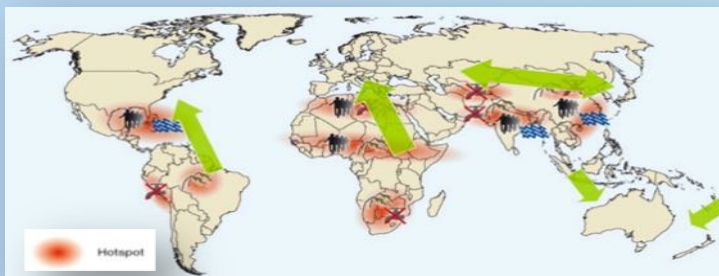


# From National to Global Scale: *Climate Change Migration and Crisis of Inclusion*

## Estimates and Projections of Climate Displaced Populations

- ❖ Estimates range from **50 million – 250 million** climate change refugees by 2050
- ❖ Climate migration will increasingly **cross borders** and increasingly seek **higher income destinations**.

## Climate Change Effects & Migration: Hotspots & Trajectories

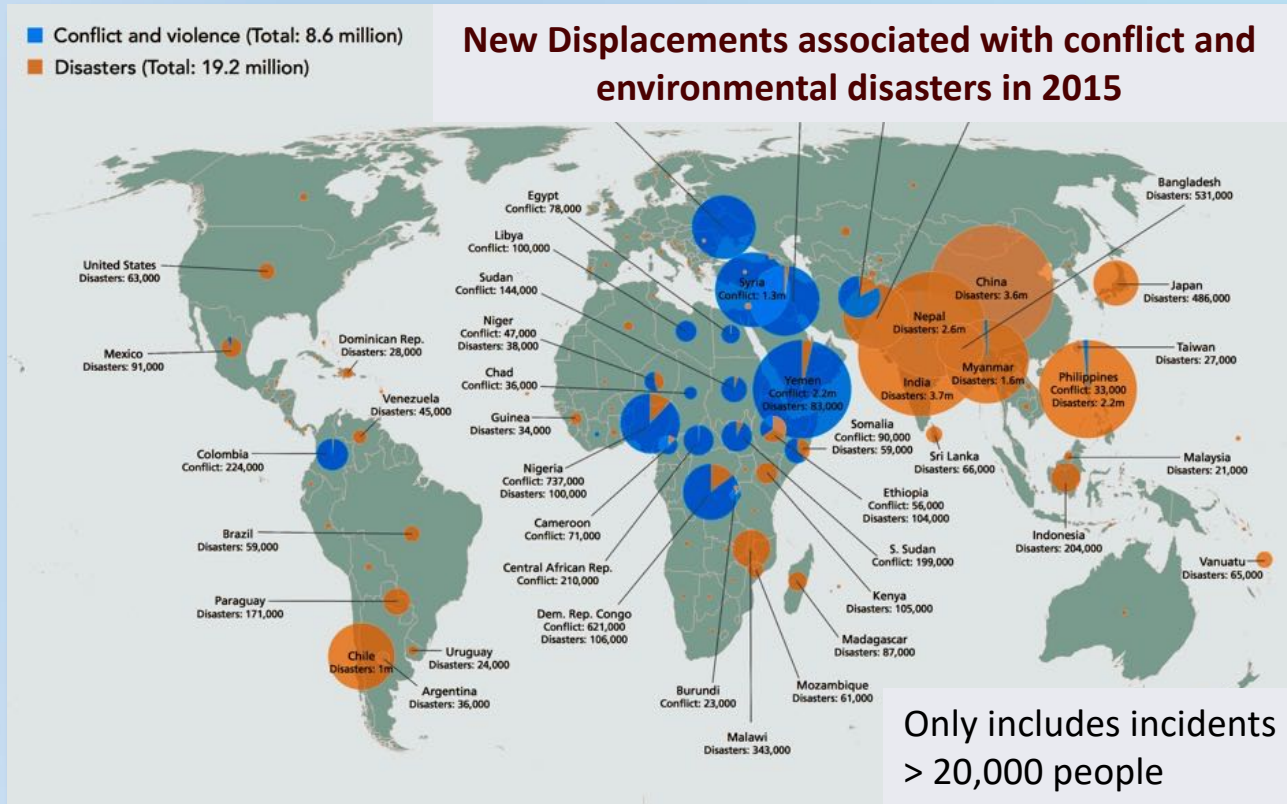


## Key Problems in (Under-)Estimating Climate Migration

1. Hidden: not accepted as a refugee claim by the UN
2. Assigned to “natural” (fast onset) environmental, conflict or “economic” migration.
3. Practice of separating migration into single (presumed) dominant causes.



# False Divisions of Migration by Proximate Causes

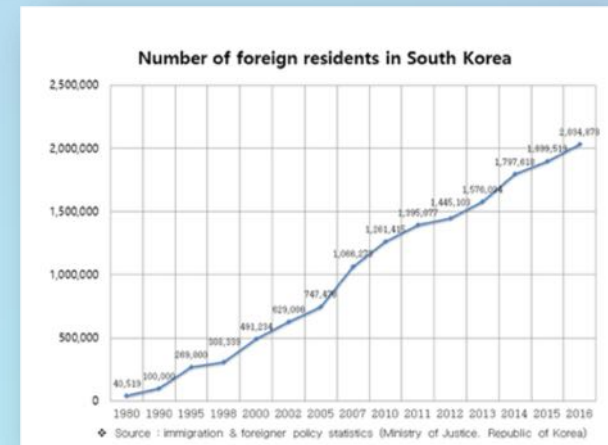


- Syria: 4 years of drought before conflict refugees appeared.
- Central America: climate change and destructive agribusiness are the major sources of migration to the U.S.
- India: 133 million people in regions suffering severe drought, but resulting migration to cities is labeled as “economic”

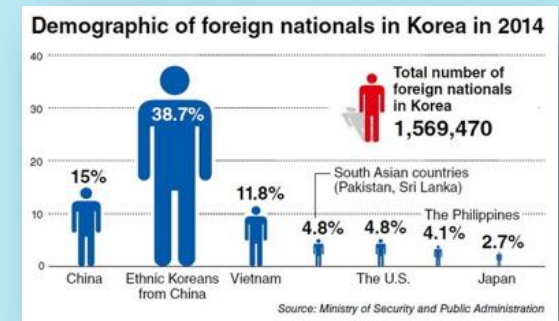
# Economic Drivers of Global Migration – Labor Shortages



- Foreign Residents in Korea



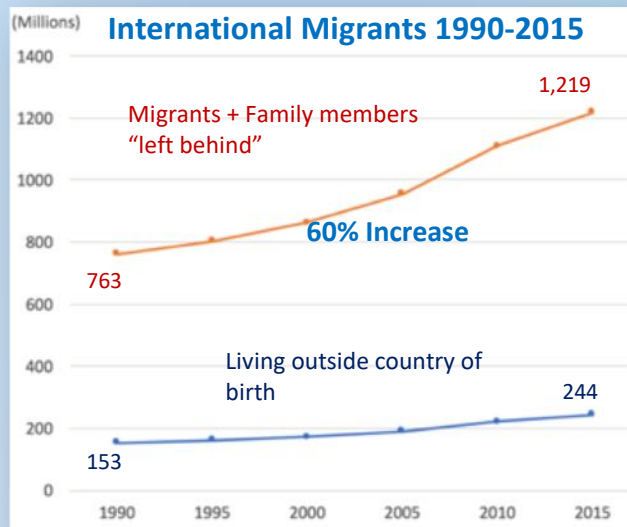
## Origins of Foreign Nationals



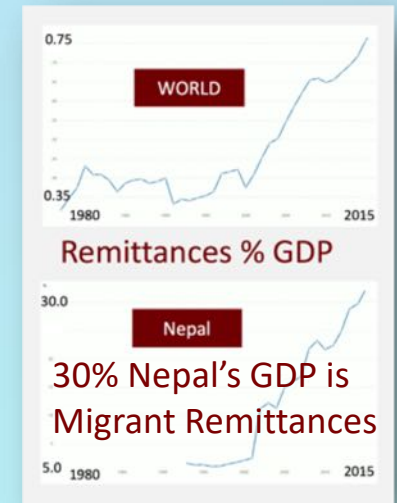
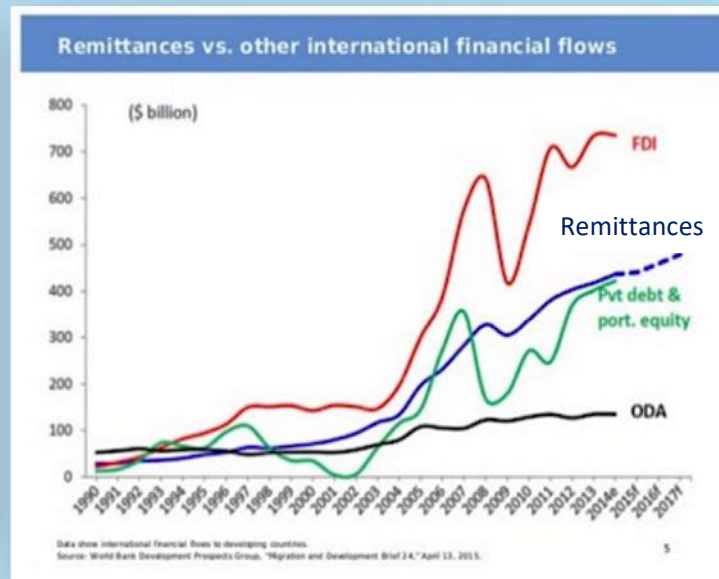
# Migration as Adaption to Climate Change

## Migrant Remittances and Global Householding

More than 1.2 billion people are engaged in the global migrant remittance economy



Source: UNFPA 2016



In 2013 Asia officially hosted 26 million foreign workers (ILO).

# National Policies on Migrant Integration

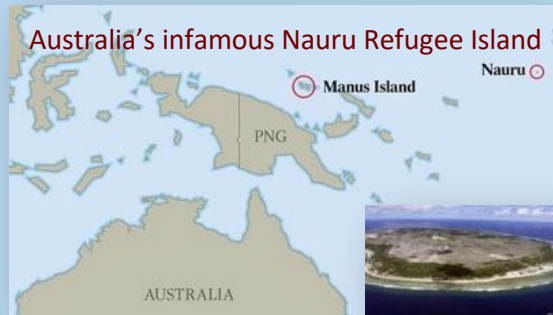
## The New Great Walls in Asia



India border with Pakistan: electrified, connected to sensors and strewn with landmines, and floodlights installed on > 50,000 poles



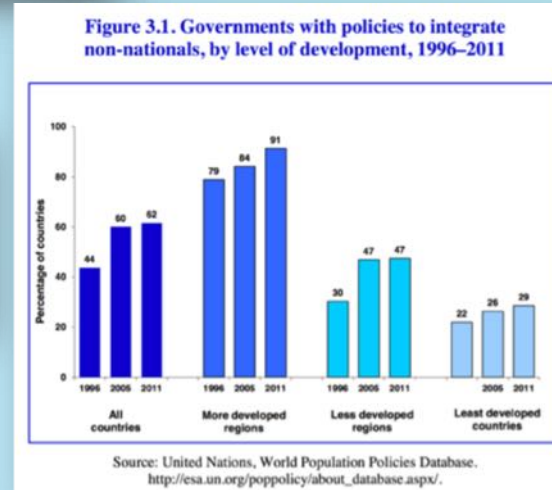
India fence covers entire Bangladesh border



Australia's infamous Nauru Refugee Island

## Invisible Walls

- ❖ No acceptance of refugees
- ❖ No pathways to citizenship
- ❖ Very limited rights to dwell, have families, access social welfare
- ❖ Disposable
- ❖ Anti-foreigners campaigns



# Inclusion with Justice, Social conviviality and environmental well-being

- Reducing energy use through participatory governance
- Urban food gardens
- Alternative energy

- Transforming abandoned spaces into community centers
- (Re-)establishing open markets, public spaces
- Participatory art and cultural festivals
- Human scale architecture



- Social economy & community enterprises
- Sharing city
- Community currency
- Collective tenure

- Participatory budgeting
- Direct citizen participation in policy and planning
- (Re-) making the commons

# Inclusion through Conviviality

## Beyond Assimilation to co-production of culture

Seoul Art Space Mullae (Seoul)  
creativity support center for  
domestic and international artists



Mardi Gras in Japan



5% of all children born in Korea have a parent originating from another country (2012)

## Community Art Projects

Japan is experiencing a “cultural movement of art festivals or art exhibitions that are held in social spaces such as downtown areas, old Japanese-style houses, closed schools, factories.”



### 3331 Arts Chiyoda, Tokyo (renovated closed school)

conducts cultural activities, such as exhibitions, workshops, and lectures, throughout the year, and art activities that focus on community relationships—both foreign and domestic—are frequently conducted




Art with significant civic involvement. Citizens from within and outside the community participate in the process of creating works of art in collaboration with the artists.

# From Urban Food Gardens – Nature and Conviviality



# The Rise of Civil Society in Asia – from insurgencies to projects, political reform and scaling up





**감사합니다**  
**THANK YOU**