



New Approach of Private Subway System "Seoul Metro Line No.9"

2010. 10. 6

Seoul Metro Line 9 Co.Ltd



CONTENTS

- I.** Project Summary
 - II.** Key Facts
 - III.** Service Info
 - IV.** Major Features
 - V.** Image & Picture
-

- Mitigation of SMG's Finance Burden

- Service Level-up and Improvement of Metro Management Structure

- Mitigation of City Traffic Congestion and Balancing of City Development

Line 9 Route

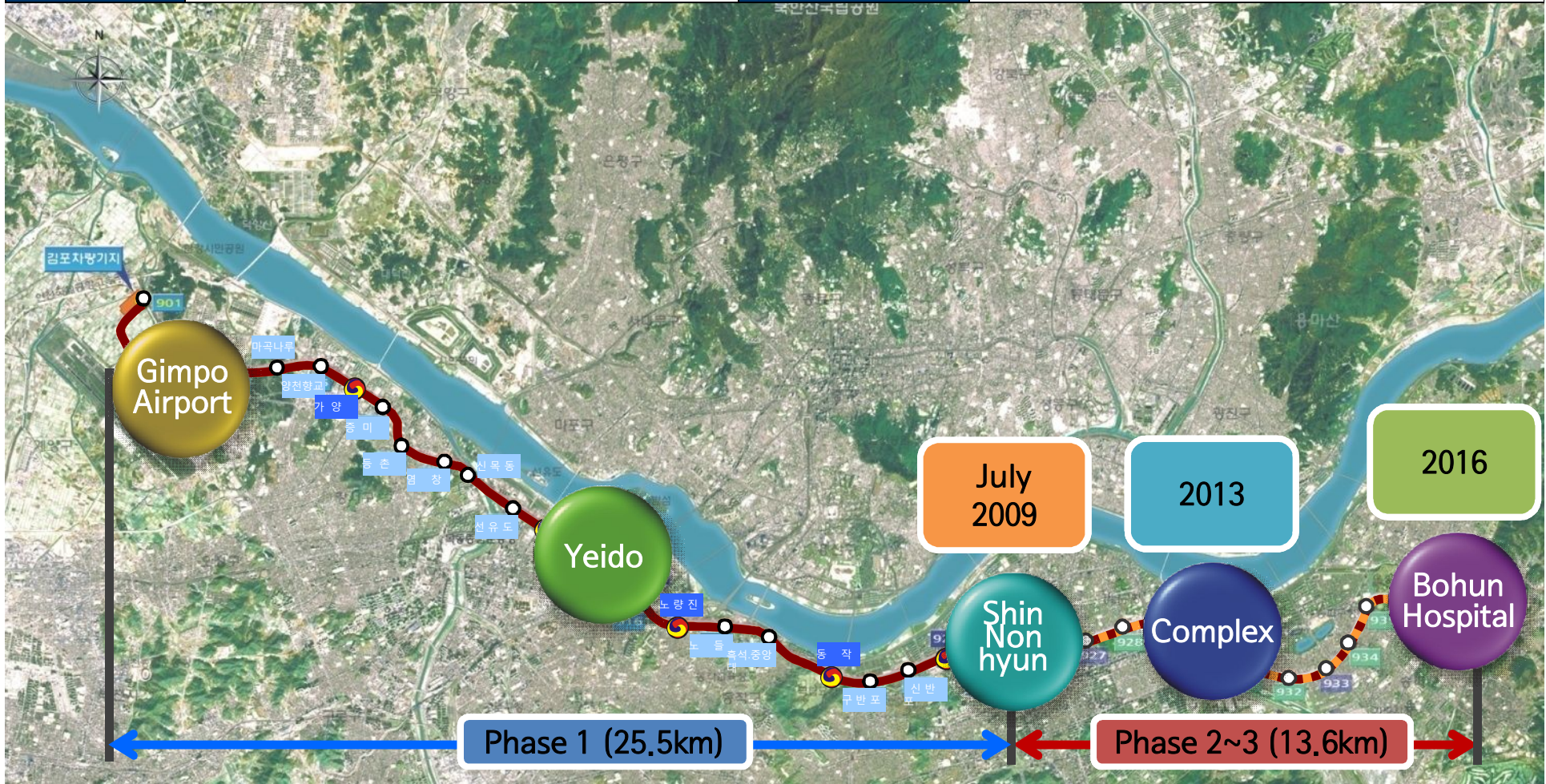


Phase 1

- 25.5km 25 Station, 1 Depot
- Opening : July. 24. 2009

Phase 2

- 2Phase : 4.5km, 5 Station
- 3Phase : 9.1km, 8 Station



Project Summary



Project Name

The Private Investment Project on the Phase 1 of Seoul Metro Line No. 9

Route

Gaehwa ~ Shinnonhyun 27km (25station & 1 Depot)

Work scope

Design & Construction, E&M Installation and Test & Commissioning

Budget

Approx. USD 3.5Bil. Civil by SMG, USD 1.0Bil.E&M by Private Investor.

Project Period

Construction : 2005. 5 ~ 2009. 7, Operation : 2009. 7 ~ 2039. 7

Project Type

Korea's First Private Subway Investment Project under BTO scheme
(under 30 year concession agreement)

Project Progress



2005. 05. 16

Implementation Agreement with SMG

2006. 06. 09

Approval of Implementation Plan

2009. 07. 24

Start of Revenue Service

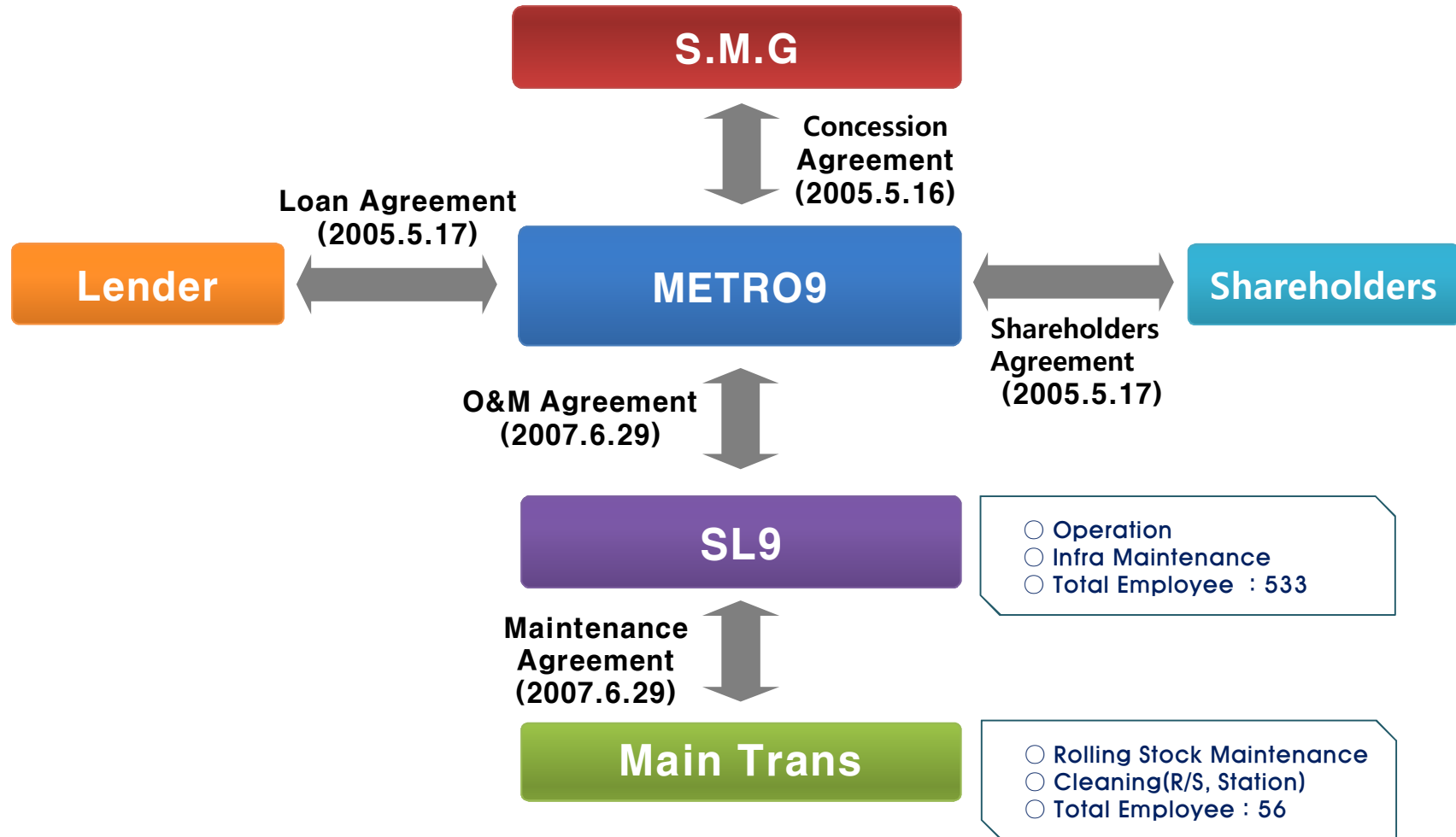
2010. 03. 25

50 mil. passengers

2010. 09. 08

100 mil. passengers

Contract Diagram



Comparison of Operating Man-Power



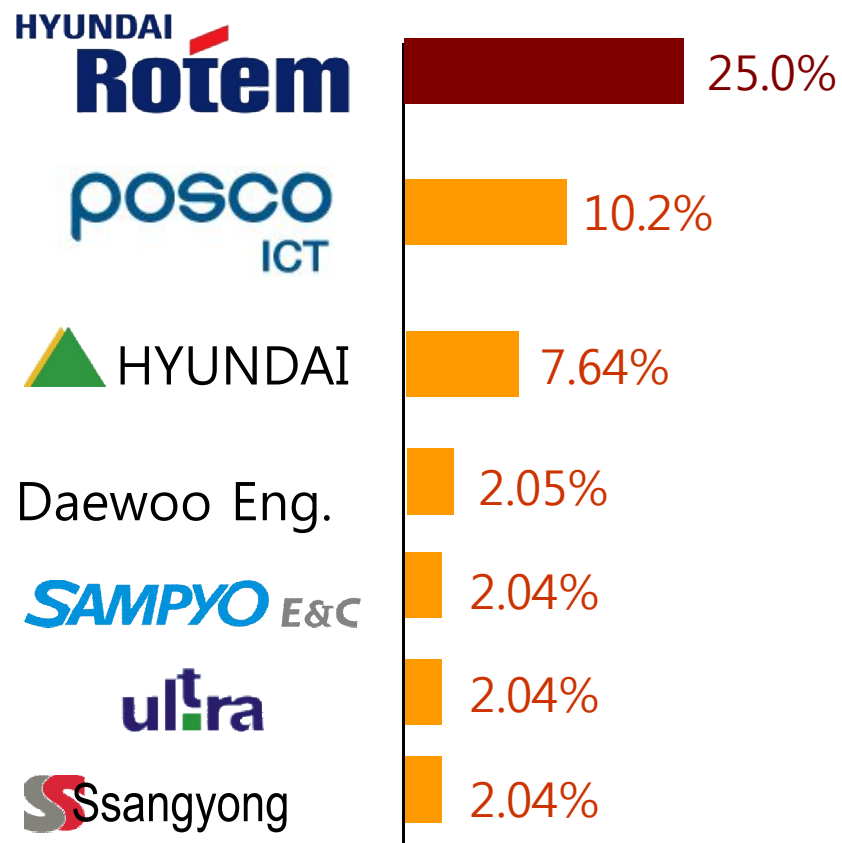
[2010. 4. 1 기준]

Descript	A company	B company	C company	Metro9	etc
Operating Kilometers	134.9	152.0	24.1	27.0	
Station	117	148	23	25 (24)	Magok-naru Station Not open
Man-Power	9,694	6,436	1,143	603	
Man-Power / Km	71.9	42.3	47.4	22.3	
Man-Power / Station	82.9	43.5	49.7	24.1 (25.1)	

Shareholders Info

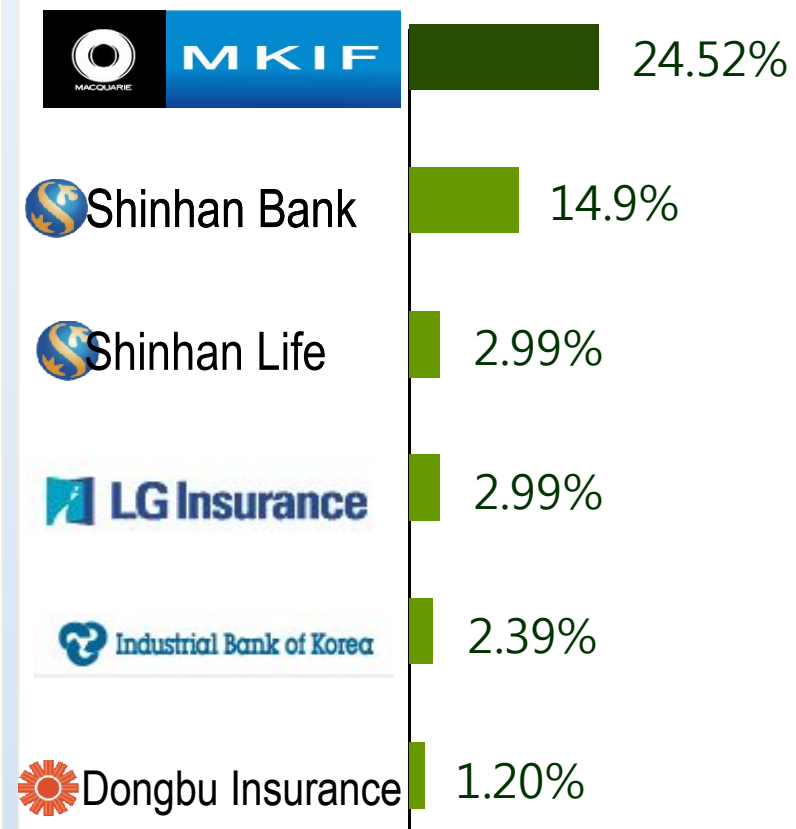


Construction Investor (CI)



Total 51% (Equity)

Financial Investor (FI)

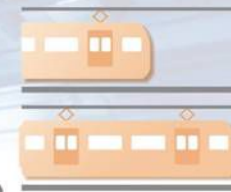


Total 49% (Equity)

Key Facts



Direct connection to Incheon International Airport Express Line at Gimpo



Operating All-stop & Express train (3:1)

Trendy Ancillary business



Dust & Danger-Free by Platform Screen-Door

Rolling Stock Maintenance By Manufacturer



Efficient Rostering (concentrated work)

Service Info.

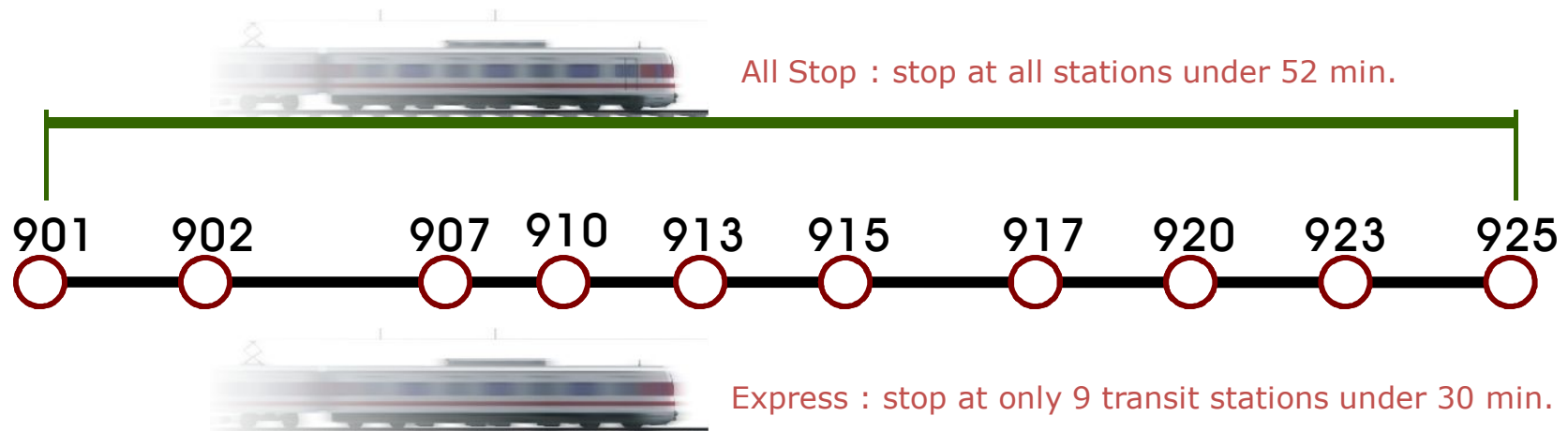


Operation Hours



● 05:30 a.m. – 01:00 a.m. of next day → Total 19h 30m

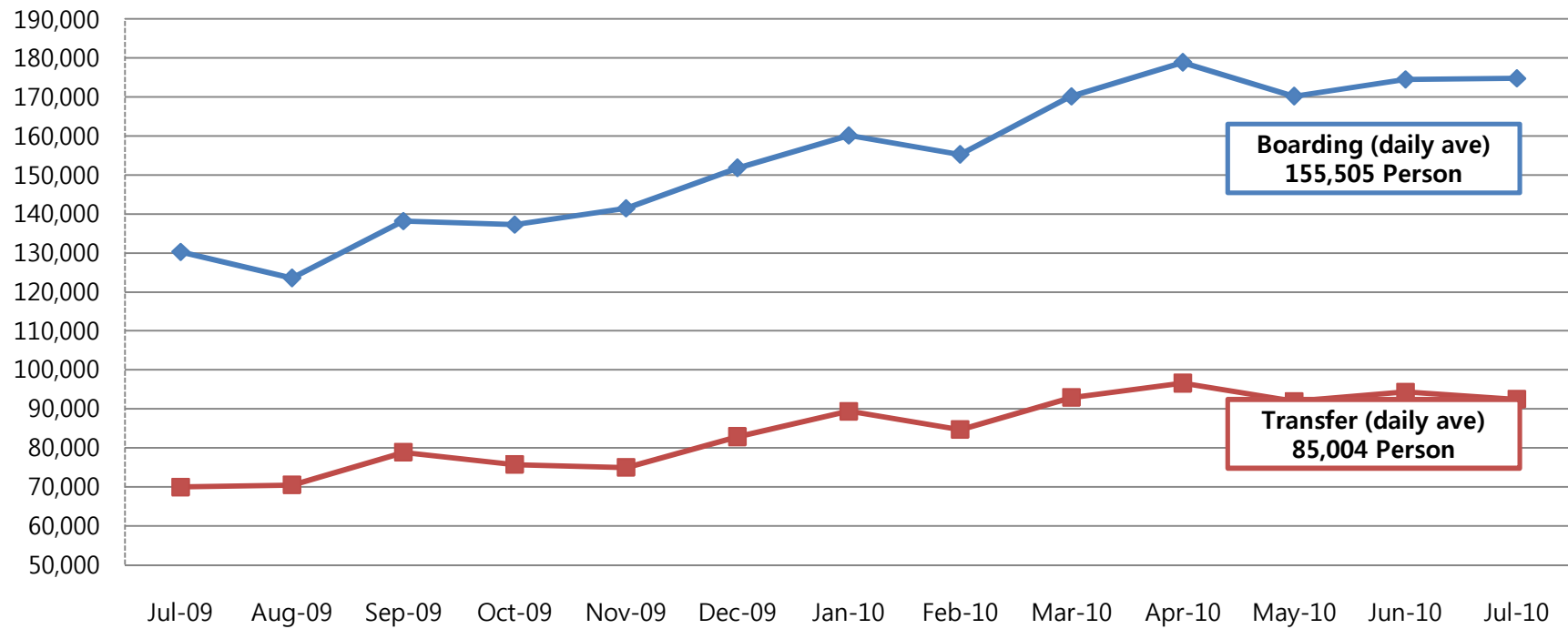
Travel Time



Traffic Status



Description	Boarding	Transfer	Total
Average Traffic Demand (Person / day)	155,505	85,004	240,509



Wish-to-Stay Space



- Cozy & Relaxed Open Cultural Space
 - Modern interior design & performances gives high satisfaction to passengers.
- Clean and Tidy Lavatory
 - Design Award lavatory system applied at every stations
- Free service on Ubiquitous net-work
 - Providing of free wireless internet, DMB, WCDMA with comfort seats.



Major Features



Distinguished Unique design



Passenger's Easy access



Enhance Revenue Potential



Major Features

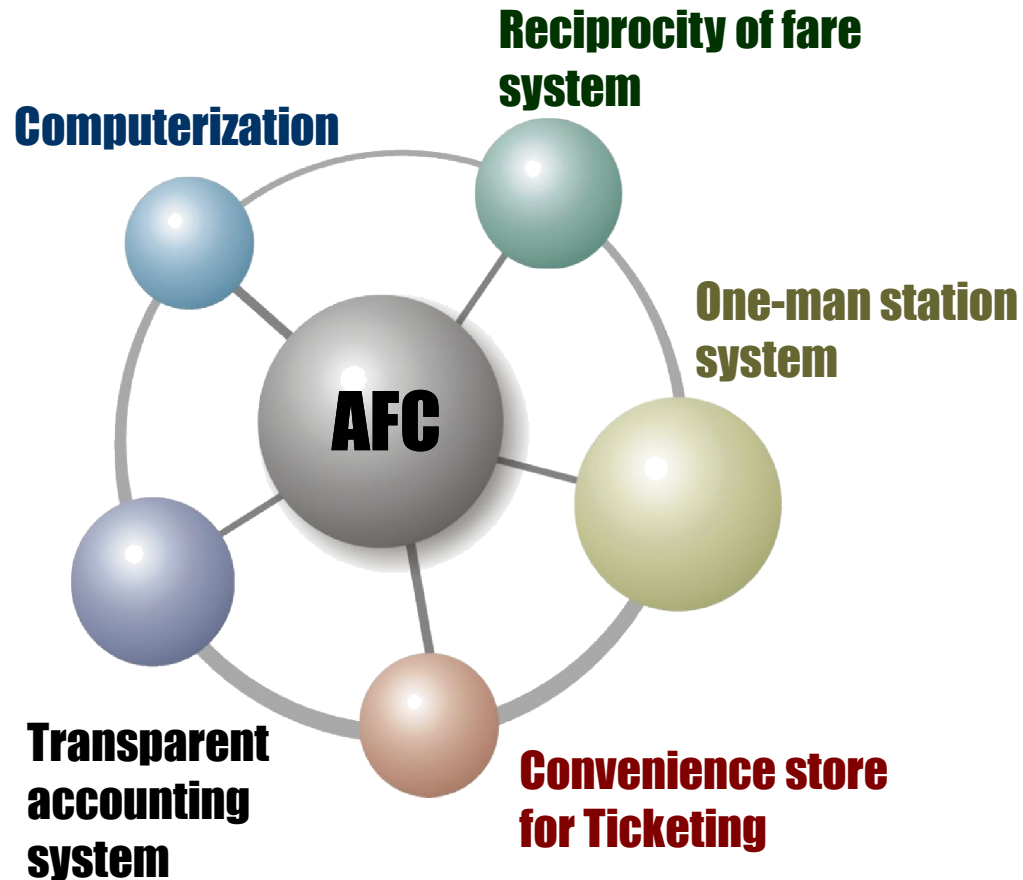


Rolling Stocks

- Interior material proven by International Fire Protection Safety Standard (NFPA 130 / BS 6853)
- Front emergency exit & wide seat (43Cm → 45Cm)
- On board monitor system for supervising platform & wide gangway applied
- Data transmitting from on-board self-diagnosis system before arriving at depot



Ticketing System



Connection to existing metropolitan public transport ticketing system (Subway ↔ Bus)

- Easy access to transit passenger
- Touch pad base RF card
- Possible passenger counting without separated transit gate

Ancillary Business



Commercial Zone

- Underground shopping center
- Small but profitable stores
- Customer friendly facilities

Advertisement in Station

- Modern advertisement technology (super size LCD monitor, Show case box)

Advertisements in Trains

- 19" LCD monitor base Destination Sign and Advertisement

Convenience Store

- Convenience to be responsible for ticket selling and first aid service



Head Office & Depot

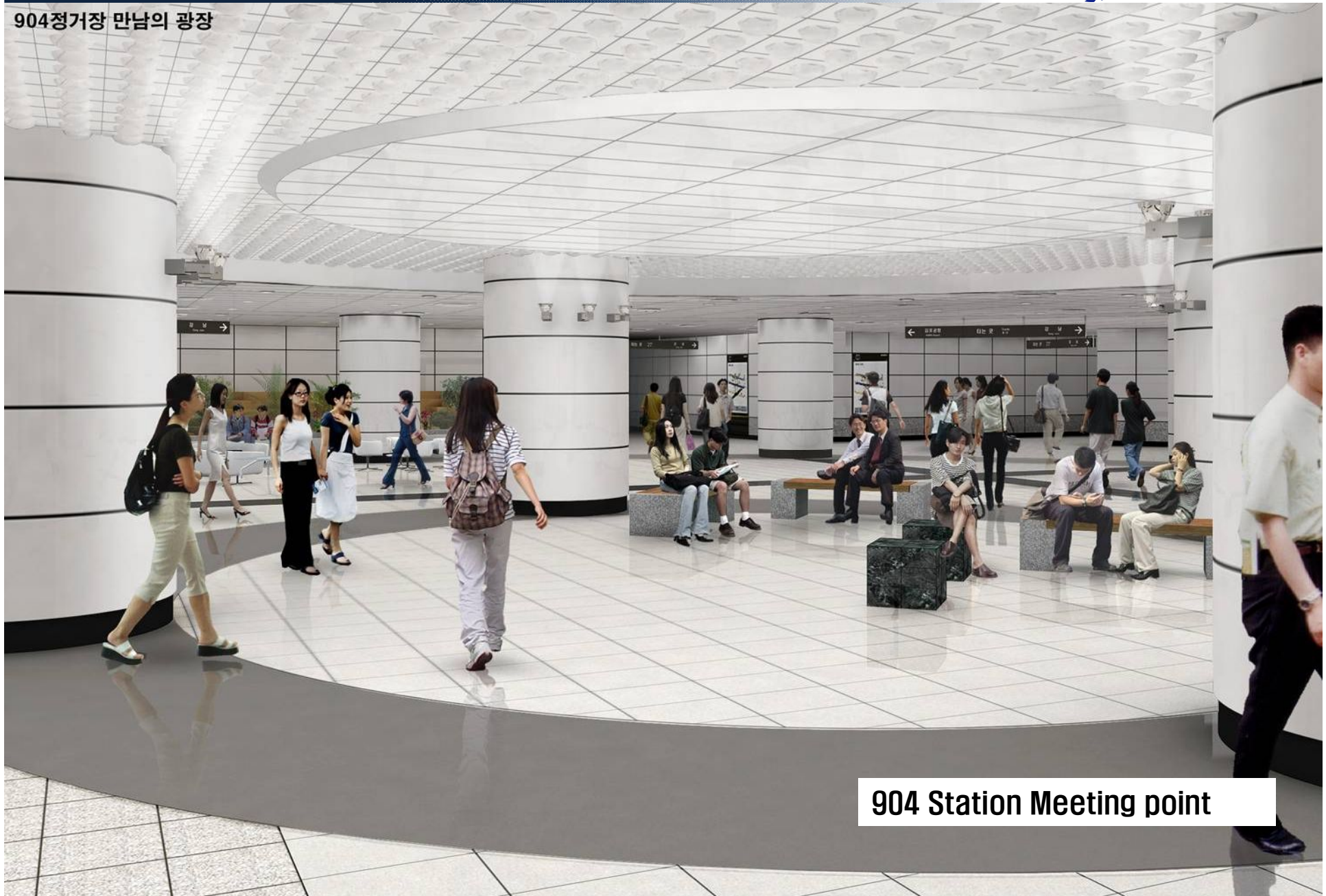


901 station & Head Office/ Depot

904 station



904정거장 만남의 광장



904 Station Meeting point

920 station



920 Station Moving-walk

925 station



925 Station Hallway

Retail stores



Retail stores



925 신논현 (AFTER)



Ticket booth & CVS



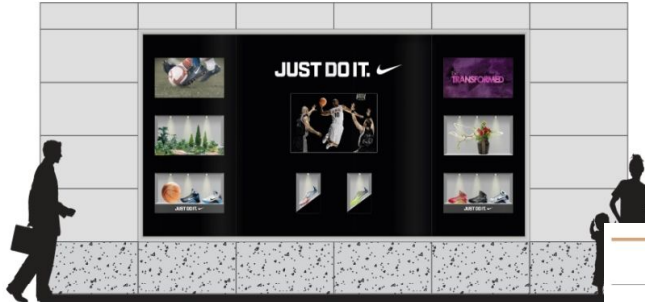
Advertisement



쇼케이스형, 0923 고속터미널역 지하 2층 벽면

■ 입면도

<Wide Color(4800mmX2400mm)>



Wide Color - 매입형(슬라이드 방식)

■ 입면도

<Wide Color(3600mmX2400mm)>



■ Simulation



■ Simulation



Thanks for visiting to us



The Private Investment Project on the Phase 1 of Seoul Subway Line No.9